

REVISIONS			
NO.	DATE	BY	DESCRIPTION
1	01/06/18	A.CH	NEW RELEASE

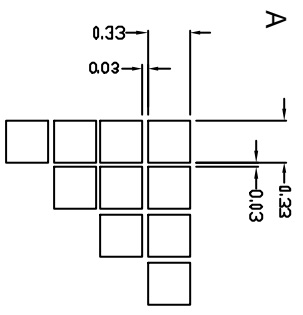
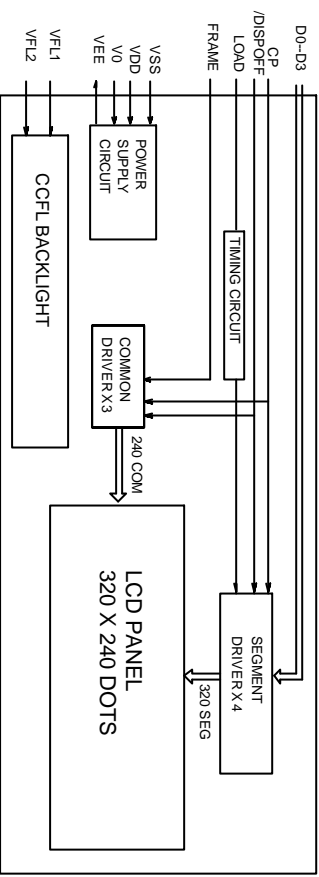
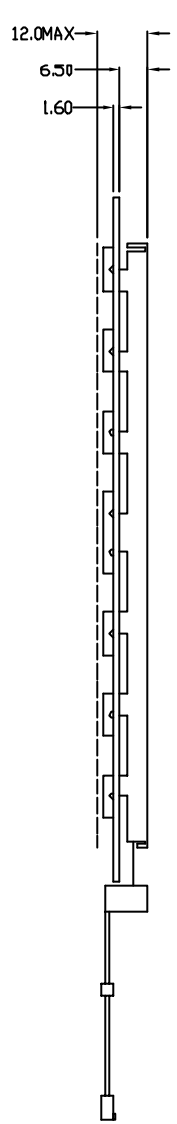
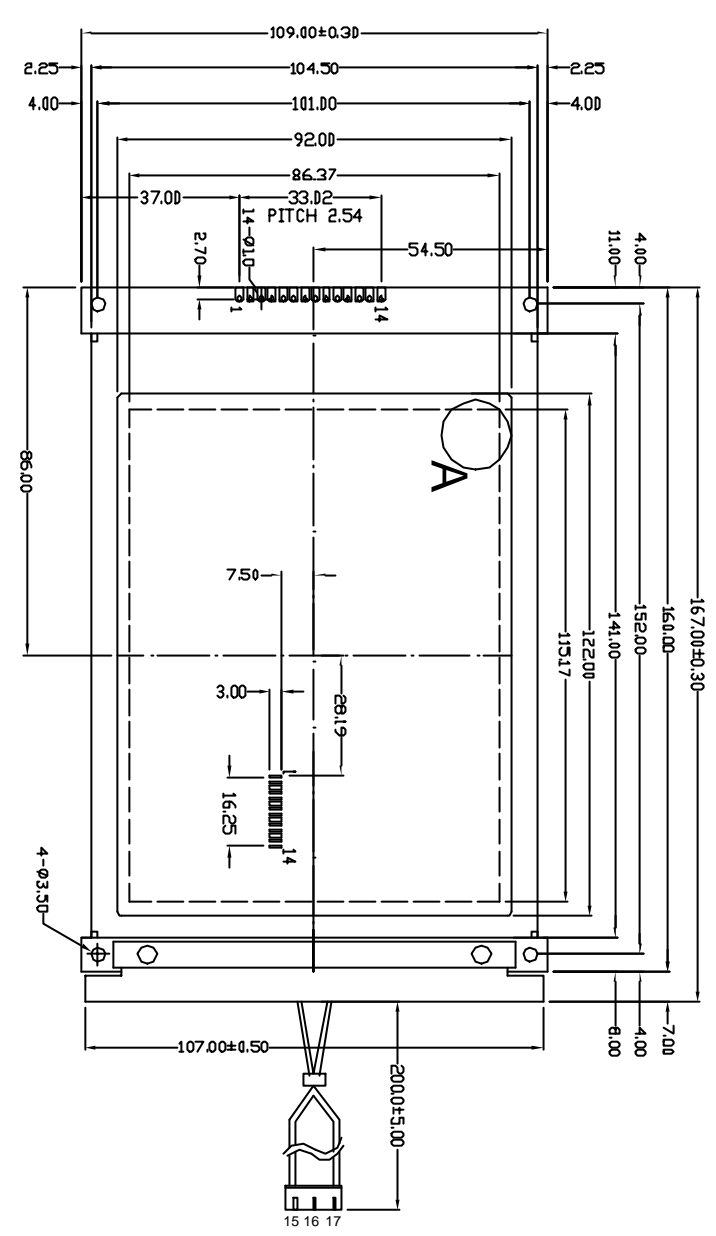
PINS ASSIGNMENT			
NO.	SYMBOL	DESCRIPTION	
1-4	D0-D3	DISPLAY DATA INPUT	
5	/DISPOFF	DISPLAY OFF CONTROL	
6	FRAME	FRAME SIGNAL FOR DISPLAY SYNCHRONIZATION	
7	NC	NO CONNECT	
8	LOAD(CL1)	DATA LATCH CLOCK	
9	CP(ICL2)	DATA SHIFT CLOCK	
10	VDD	POWER SUPPLY FOR LOGIC AND LCD	
11	VSS	GROUND	
12	VEE	NEGATIVE VOLTAGE INPUT/OUTPUT	
13	V0	OPERATING VOLTAGE FOR LCD	
14	FG	FRAME GROUND	
15	VFL1	POWER SUPPLY FOR CCFL	
16	NC	NO CONNECT	
17	VFL2	POWER SUPPLY FOR CCFL	

ABSOLUTE MAXIMUM RATING			
ITEM	SYMBOL	MIN	MAX
VOLTAGE FOR LOGIC	VDD-VSS	-0.3	7.0
POWER SUPPLY (LOGIC)	VDD-VSS	-0.3	30.0
POWER SUPPLY (LCD DRV.)	VDD-V0	-0.5	VDD
INPUT VOLTAGE	VI	-	0.8

ELECTRICAL CHARACTERISTICS					
ITEM	SYMBOL	MIN	TYP	MAX	UNIT
VOLTAGE FOR LOGIC	VDD-VSS	4.75	5.0	5.25	V
SUPPLY CURRENT	IDD	-	11.9	20	mA
LCD OPERATING VOLTAGE	V0	24.3	25.5	26.7	V
	25C	23.7	24.9	26.1	V
	40C	23.1	24.3	25.5	V
INPUT VOLTAGE	HI	VH	2.0	-	VDD
	LO	VL	0	-	V

MECHANICAL SPECIFICATIONS		
ITEM	SPECIFICATION	UNIT
OVERALL SIZE	167.0W x 109.00H x 12.0T	MM
VIEWING AREA	122.0W x 92.0H	MM
DOT NUMBER	320X 240	DOTS
DOT SIZE	0.33W/ x 0.33H	MM
DOT PITCH	0.36W/ x 0.36H	MM

OPTIONS	
1.	LCD TYPE: BW/STN, Y/G/STN
2.	BACKLIGHT: WITHOUT BACKLIGHT, EL: CCFL
3.	COLOR OF BACKLIGHT: Y/G, BLUE, WHITE
4.	TEMPERATURE RANGE: NORMAL(0-50C)
5.	POWER SUPPLY: ON BOARD DC/DC(SINGLE 5.0V);
6.	VIEWING ANGLE: 6H;



NT-G3202404A

320 X 240 DOTS GRAPHIC LCM



ALL DIMENSIONS ARE IN MM. TOLERANCE IS +/-0.2 UNLESS OTHERWISE NOTED.

