

TARGET DATASHEET

MARCH 2003

DESCRIPTION

The 78P2352 is TDK's second generation LIU for 155 Mbit/s SDH/SONET (OC-3, STS-3, or STM-1) and 140Mbit/s PDH (E4) applications. The device is a dual channel, single chip solution that includes an integrated CDR in the transmit path for flexible NRZ to CMI conversion. The device can interface to 75Ω coaxial cable using CMI coding or directly to a fiber optics module using NRZ coding. The 78P2352 is compliant with all respective ANSI, ITU-T, and Telcordia standards for jitter tolerance, generation, and transfer.

APPLICATIONS

- Central Office Interconnects
- DSLAMs
- Add Drop Multiplexers (ADMs)
- PDH/SDH test equipment

FEATURES

- G.703 compliant line interface for 139.264 Mbps or 155.52 Mbps CMI-coded coax transmission.
- LVPECL compatible line interface for 155.52 Mbps NRZ-coded fiber applications.
- Integrated adaptive CMI equalizer and CDR in receive path.
- Serial, LVPECL-compatible system interface with integrated CDR in transmit path for NRZ to CMI conversion.
- 4-bit parallel CMOS system interface with master/slave Tx clock modes.
- Configurable via HW control pins or 4-wire μP interface
- Operates from a single reference clock input.
- Compliant with ANSI T1.105.03-1994; ITU-T G.751, G.813, G.823, G.825, G.958; and Telcordia GR-253-CORE for jitter performance.
- Provides Loss of Lock (LOL), CMI Line Code Violation (LCV), and G.775 compliant Loss of Signal (LOS) detection.
- Receiver Monitor Mode
- Operates from a single 3.3V supply
- 128-pin TQFP (JEDEC LQFP) package

BLOCK DIAGRAM

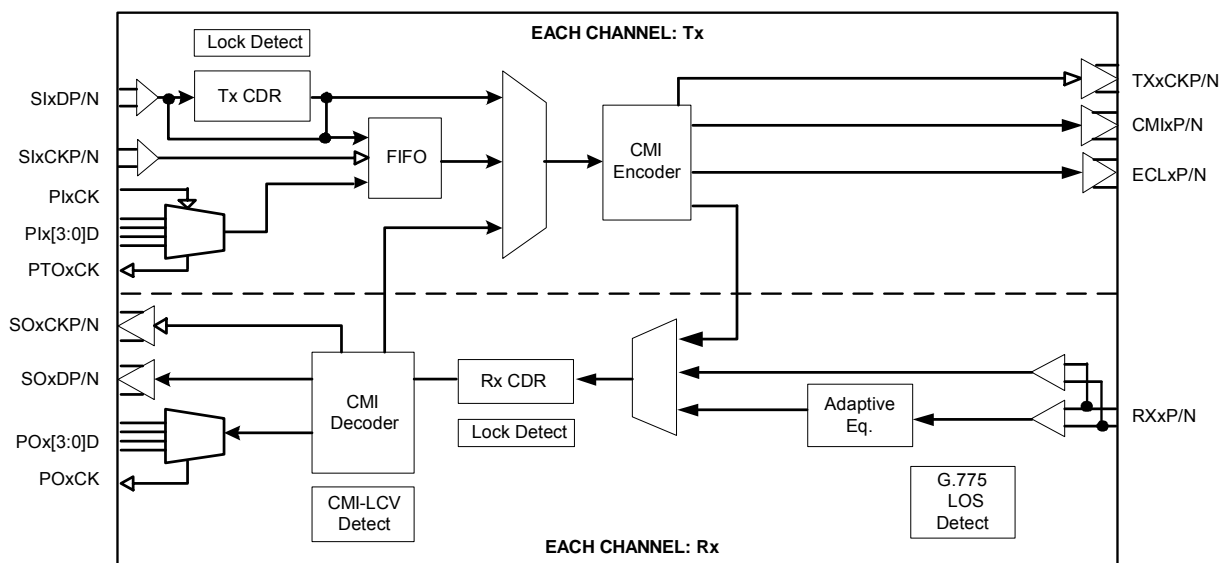


TABLE OF CONTENTS	2
FUNCTIONAL DESCRIPTION	4
MODE SELECTION	4
REFERENCE CLOCK	4
RECEIVER OPERATION	4
<i>Receiver Monitor Mode</i>	4
<i>Loss of Signal / Loss of Lock</i>	4
TRANSMITTER OPERATION	5
<i>Serial Modes</i>	5
<i>Parallel Modes</i>	6
<i>Transmit Driver</i>	6
<i>Clock Synthesizer</i>	6
POWER-DOWN FUNCTION	6
LOOPBACK MODES	7
POWER-ON RESET	7
SERIAL CONTROL INTERFACE	7
PROGRAMMABLE INTERRUPTS	7
REGISTER DESCRIPTION	8
REGISTER ADDRESSING	8
REGISTER TABLE	8
LEGEND	9
<u>GLOBAL REGISTERS</u>	9
ADDRESS 0-0: MASTER CONTROL REGISTER	9
ADDRESS 0-1: INTERRUPT CONTROL REGISTER	10
<u>PORT-SPECIFIC REGISTERS</u>	11
ADDRESS N-0: MODE CONTROL REGISTER	11
ADDRESS N-1: SIGNAL CONTROL REGISTER	12
ADDRESS N-2: ADVANCED CONTROL REGISTER 1	12
ADDRESS N-3: ADVANCED CONTROL REGISTER 2	12
ADDRESS N-4: MODE CONTROL REGISTER 2	13
ADDRESS N-5: STATUS MONITOR REGISTER	13
PIN DESCRIPTION	14
LEGEND	14
TRANSMITTER PINS	14
RECEIVER PINS	15
REFERENCE AND STATUS PINS	15
CONTROL PINS	16
SERIAL-PORT PINS	17
POWER AND GROUND PINS	17

TABLE OF CONTENTS (continued)

ELECTRICAL SPECIFICATIONS	18
ABSOLUTE MAXIMUM RATINGS	18
RECOMMENDED OPERATING CONDITIONS	18
DC CHARACTERISTICS	18
ANALOG PINS CHARACTERISTICS	19
DIGITAL I/O CHARACTERISTICS	19
<u>Pins of type CI, CIU, CID</u>	19
<u>Pins of type CIS</u>	19
<u>Pins of type CO and COZ</u>	19
<u>Pins of type PO</u>	19
SERIAL-PORT TIMING CHARACTERISTICS	20
TRANSMITTER TIMING CHARACTERISTICS	21
TIMING DIAGRAM: Transmitter Waveforms	21
REFERENCE CLOCK CHARACTERISTICS	22
RECEIVER TIMING CHARACTERISTICS	22
TIMING DIAGRAM: Receive Waveforms	22
TRANSMITTER SPECIFICATIONS FOR CMI INTERFACE	23
TRANSMITTER OUTPUT JITTER	28
RECEIVER (Transformer-coupled)	29
RECEIVER SPECIFICATIONS FOR CMI INTERFACE	29
RECEIVER JITTER TOLERANCE	30
RECEIVER JITTER TRANSFER FUNCTION	32
CMI Mode Loss of Signal Condition	33
APPLICATION INFORMATION	34
EXTERNAL COMPONENTS	34
TRANSFORMER SPECIFICATIONS	34
RECOMMENDED LVPECL TERMINATIONS	34
MECHANICAL SPECIFICATIONS	35
PACKAGE INFORMATION	36
Revision History	37

FUNCTIONAL DESCRIPTION

The 78P2352 contains all the necessary transmit and receive circuitry for connection between 139.264Mbit/s and 155.52Mbit/s signals and the digital universe.

The chip is controllable through pins or serial port register settings. In hardware mode (pin control) the SPSL pin must be low. In software mode (SPSL pin high), control pins are disabled and the 78P2352 must be configured via the 4-wire serial port.

MODE SELECTION

The SDO_E4 pin or E4 register bit determines which rate the device operates in according to the table below. This control combined with CKSL also selects the global reference frequency.

Rate	SDO_E4 pin	E4 bit
E4	High	1
STM-1, STS-3, OC-3	Low	0

The SEN_CMI pin or CMI register bit selects one of two media for reception and transmission: coaxial cable in CMI mode or optical fiber in ECL (NRZ) mode. Independent operation is available with register controls (CMI bit).

Media (coding)	SEN_CMI pin	CMI bit
75 ohm Coax (CMI)	High	1
Fiber (NRZ)	Low	0

The SDI_PAR pin or PAR register bit selects the interface to the framer to be four bit parallel or serial. For each interface there are different clocking schemes for the transmitter. These modes and their controls are described in the TRANSMITTER OPERATION section.

REFERENCE CLOCK

The 78P2352 requires a reference clock supplied to the CKREFP/N pins. For reference frequencies of 77.76MHz or lower, the device accepts a single ended CMOS input at CKREFP. For reference frequencies of 139.264/155.52MHz, the device accepts a differential clock input at CKREFP/N. The frequency of this reference input is selected by the rate selection and the CKSL control pin or register bit.

CKSL pin	Reference Frequency	
	SDO_E4 low	SDO_E4 high
Low	19.44MHz	17.408MHz
Float	77.76MHz	N/A
High	155.52MHz	139.264MHz
CKSL[1:0] bits	E4 bit = 0	E4 bit = 1
0 0	19.44MHz	17.408MHz
1 0	77.76MHz	N/A
1 1	155.52MHz	139.264MHz

RECEIVER OPERATION

The receiver accepts serial data, at 155.52Mbit/s or 139.264Mbit/s from the RXxP/N inputs. In CMI mode, the CMI-coded inputs come from a coaxial cable that is transformer-coupled to the chip. In ECL (NRZ) mode, the input pins receive NRZ LVPECL level signals from an O/E converter.

The CMI signal first enters an AGC, which has a selectable gain range setting. When Receiver Monitor Mode is enabled, the AGC can compensate for a monitor signal with 16 to 20 dB of flat loss. The signal then enters a high performance adaptive equalizer designed to overcome inter-symbol interference caused by long cable. The variable gain differential amplifier automatically controls the gain to maintain a constant voltage level output regardless of the input voltage level. In ECL (NRZ) mode, the input signals bypass the adaptive equalizer.

The outputs of the data comparators are connected to the clock recovery circuits. The clock recovery system employs a digital PLL, which uses a reference frequency derived from the clock applied to the CKREFP/N pins.

After the clock and data have been recovered, the data is converted to binary by the CMI to binary decoder. The **CMI Line Code Violation (LCV)** detector will flag code errors while the decoder continues to function normally. The three conditions that will flag a LCV are:

- '0' has a falling transition mid-bit instead of a rising transition
- A high '1' is recovered when it should have been a low '1'
- A low '1' is recovered when it should have been a high '1'

In serial mode, the clock and data are transmitted through the LVPECL drivers. In parallel mode, the data is converted into four bit parallel segments before being transmitted through the CMOS drivers.

Receiver Monitor Mode

The SCK_MON pin or MONx register bit puts the receiver in monitor mode and adds 20dB of flat gain to the receive signal before equalization. The SCK_MON pin controls the monitor mode for both channels simultaneously. Individual monitor mode selection can be done using the MONx register bit. Note that Receiver Monitor Mode is available in CMI mode only.

Loss of Signal / Loss of Lock

The 78P2352 includes standards compliant Loss of Signal (LOS) and Loss of Lock (LOL) indicators for the receive signals. During LOS conditions, the receive data outputs are squelched while the receive clock outputs a line rate clock generated from the reference clock input. The LOS indicator is intended for electrical CMI interfaces only.

78P2352 Dual Channel OC-3/STM1-E/E4 Line Interface Unit

TRANSMITTER OPERATION

The transmitter section generates an analog signal for transmission through either a transformer onto the coaxial cable or directly to a fiber optics module.

The 78P2352 provides a flexible system interface for compatibility with most off-the-shelf framers and custom ASICs. The device supports a 4-bit parallel interface in either slave or master clocking modes and a number of serial NRZ modes.

Serial Modes

In **Figure 1**, serial NRZ data is input to the 78P2352 on the SIDxP/N pins at LVPECL levels. The data is latched in on the rising edge of SICKxP/N. A clock decoupling FIFO is provided to decouple the on chip and off chip clocks. The SICKxP/N clock provided by the framer/mapper IC should be source synchronous with the internal reference transmit clock if the FIFO is to be used. Since both clocks go through different delay paths, it is inevitable that the phase relationship between the two clocks can vary in a bounded manner due to the fact that the absolute delays in the two paths can vary over time. The FIFO is designed to allow long-term clock phase drift not exceeding +/- 25.6ns to be handled without transmit error. If the clock wander exceeds the specified limits, the FIFO will over or under flow, and the FERRx register signal will be asserted. The FIFO is then automatically re-centered. This signal can be used to trigger an interrupt. This interrupt event is cleared when an FRSTx pulse is applied, and the FIFO is re-centered.

If no serial transmit clock is available, as in **Figure 2**, the 78P2352 will recover a clock from the serial NRZ data input and pass the data through the FIFO. In this mode, the NRZ data should be source synchronous with the reference clock applied at CKREFP/N. Each transmitter also includes a Loss of Lock indicator (TXLOL) which can be used to trigger and interrupt. Note that the FIFO is automatically re-centered when the TXLOL register bit transitions from high to low.

Figure 3 represents the condition where no serial transmit clock is available and the data is not source synchronous to the reference clock input. In this mode, the 78P2352 will recover a clock from the serial pliesochronous data and bypass the FIFO.

Each of the described transmit serial modes can be configured in HW mode and SW mode as shown in the table below:

Serial Mode	HW Control Pins		SW Control Bits	
	SDI_PAR	CKMODE	PAR	SMOD[1:0]
Synchronous clock + data (CDR bypass)	Low	Low	0	0 0
Synchronous data	Low	Floating	0	1 0
Plesiochronous data (FIFO bypass)	Low	High	0	0 1

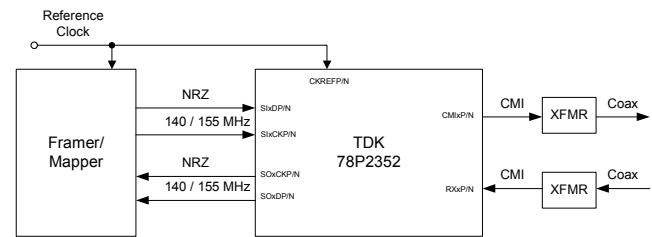


Figure 1: Synchronous; clock and data available (Tx CDR bypassed, FIFO enabled)

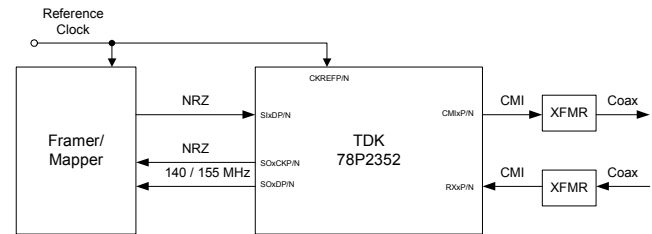


Figure 2: Synchronous; data only (Tx CDR enabled, FIFO enabled)

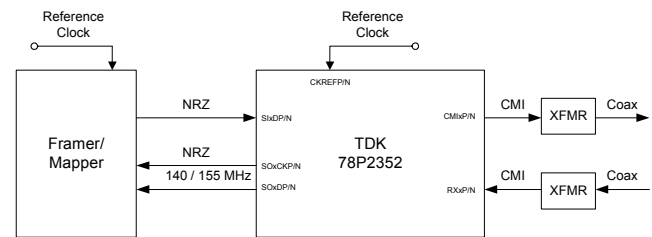


Figure 3: Plesiochronous; data only (Tx CDR enabled, FIFO bypassed)

78P2352 Dual Channel OC-3/STM1-E/E4 Line Interface Unit

Parallel Modes

In parallel modes, 4-bit CMOS data segments are input to the chip with a 38.88MHz clock. These inputs are passed to the 4x8 decoupling FIFO and then to a serializer for transmission. For maximum compatibility, the 78P2352 can operate in both slave and master clock modes as shown in Figures 4, 5 respectively..

Parallel Mode	HW Control Pins		SW Control Bits	
	SDI_PAR	CKMODE	PAR	PMODE
Slave	High	Low/Float	1	0
Master	High	High	1	1

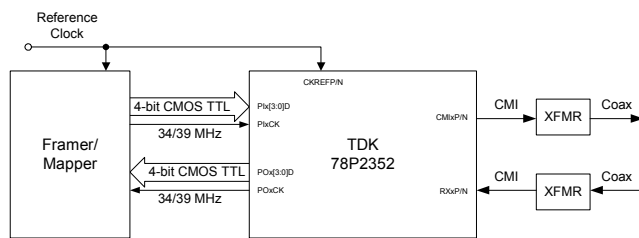


Figure 4: Slave Parallel Mode

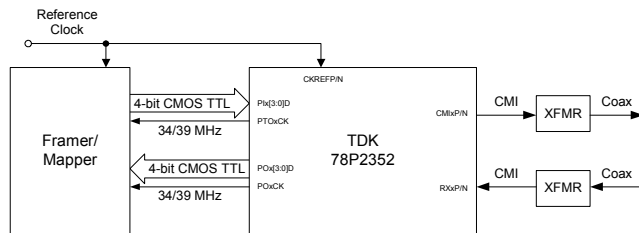


Figure 5: Master Parallel Mode

Transmit Driver

When the CMI pin is high, the chip is in CMI mode and a 75Ω coaxial cable is used as the transmission medium. In this mode, the CMIxP/N pins connect the chip to the coaxial cable through a transformer and termination resistors. In CMI mode, the transmitter shapes the transmit pulses to meet the appropriate template. Advanced peaking and amplitude controls are also available in both HW and SW modes to accommodate for less than ideal board conditions

When the CMI pin is low, the chip is in ECL (NRZ) mode. The output data signal from the ECLxP/N pins have LVPECL levels and interface directly to a fiber module. The CMI driver, encoder and decoder are disabled in ECL (NRZ) mode.

A 2x line rate clock is also available at the TXCKxP/N pins for downstream synchronization or interfacing to equipment lacking integrated clock recovery.

Clock Synthesizer

The transmitter clock synthesizer is a low-jitter PLL that generates a 311.04MHz (278.528MHz) clock for the CMI encoder. A synthesized line rate reference clock is also used in both the receive and transmit sides.

POWER-DOWN FUNCTION

Power-down control is provided to allow the 78P2352 to be shut off. Transmit and receive power-down can be set independently through SW control. Global power-down is achieved by powering down the transmit and receive sections in both channels. Note the serial interface and Configuration Registers are not affected by power-down.

In HW mode, both transmitters can be powered down using the TXPD control pin.

LOOPBACK MODES

In SW mode, LLBKx and RLBKx bits are provided to activate the local and remote loopback modes respectively. In HW mode, the LPBKx pins can be used to activate local and remote loopback modes as shown below.

LPBK pin	Loopback Mode
Low	Normal operation
Float	Remote (digital) Loopback: Recovered receive clock and data looped back to transmitter
High	Local (analog) Loopback: Transmit clock and data looped back to receiver

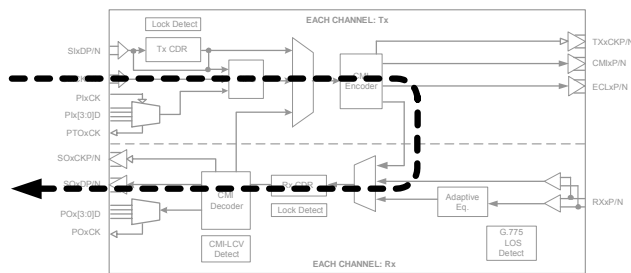


Figure 6: Local (Analog) Loopback

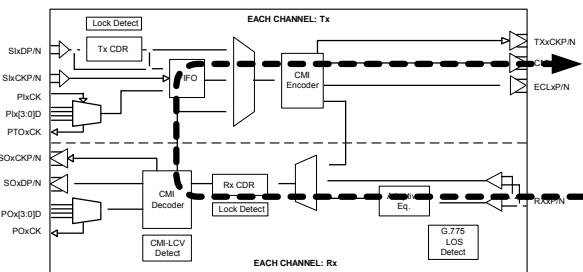


Figure 7: Remote (Digital) Loopback

POWER-ON RESET

Power-On Reset (POR) function is provided on chip. Upon initial power-up, a reset pulse is internally generated. This resets all registers to their default values as well as all state machines within the transceiver to known initial values. The reset signal is also brought out to the POR pin. The POR pin is a special function pin that allows for the following:

- Override the internal POR signal by driving in an external POR signal;
- Use the POR signal to drive other IC's power-on reset;
- Add external capacitor to slow down the release of power-on reset (approximately 8µs per nF added).

The internal resistance of the POR pin is approximately 5kΩ.

SERIAL CONTROL INTERFACE

The serial port controlled register allows a generic controller to interface with the 78P2352. It is used for mode settings, diagnostics and test, retrieval of status and performance information, and for on-chip trimming. The SPSL pin must be high in order to use the serial port.

The serial interface consists of four pins: Serial Port Enable (SEN_CMI), Serial Clock (SCK_MON), Serial Data In (SDI_PAR), and Serial Data Out (SDO_E4). The SEN_CMI pin initiates the read and write operations. It can also be used to select a particular device allowing SCK_MON, SDI_PAR and SDO_E4 to be bussed together. SCK_MON is the clock input that times the data on SDI_PAR and SDO_E4. Data on SDI_PAR is latched in on the rising-edge of SCK_MON, and data on SDO_E4 is clocked out using the falling edge of SCK_MON.

SDI_PAR is used to insert mode, address, and register data into the chip. Address and Data information are input least significant bit (LSB) first. The mode and address bit assignment and register table are shown in the following section.

SDO_E4 is a tristate capable output. It is used to output register data during a read operation. SDO_E4 output is normally high impedance, and is enabled only during the duration when register data is being clocked out. Read data is clocked out least significant bit (LSB) first.

If SDI_PAR coming out of the micro-controller chip is also tristate capable, SDI_PAR and SDO_E4 can be connected together to simplify connections.

The maximum clock frequency for register access is 20MHz.

PROGRAMMABLE INTERRUPTS

In addition to the receiver LOS and LOL status pins, the 78P2352 provides a programmable interrupt for each transmitter and receiver. In HW control mode, the default functions of each interrupt is as follows:

- INTTx = Transmit Loss of Lock (TXLOL) or FIFO error (FERR)
- INTRx = CMI Line Code Violation (CMIERR)

REGISTER DESCRIPTION

REGISTER ADDRESSING

Address Bits	Bit 7	Bit 6	Bit 5	Bit 4	Bit 3	Bit 2	Bit 1	Bit 0
	Port Address				Sub-Address			Read/Write
Assignment	PA[3]	PA[2]	PA[1]	PA[0]	SA[2]	SA[1]	SA[0]	R/W*

REGISTER TABLE

a) PA[3:0] = 0 : Global Registers

Sub Addr	Reg. Name	Description	Bit 7	Bit 6	Bit 5	Bit 4	Bit 3	Bit 2	Bit 1	Bit 0
0	MSCR (R/W)	Master Control	E4 <0>	--	PAR <0>	CKSL[1] <X>	CKSL[0] <X>	--	--	SRST <0>
1	INTC (R/W)	Interrupt Control	INPOL <0>	--	MCERR <1>	MRLOS <0>	MRLOL <0>	--	MTLOL <1>	MFERR <1>
2	--	Reserved	--	--	--	--	--	--	--	--

b) PA[3:0] = 1, 2 : Port-Specific Registers

Sub Addr	Reg. Name	Description	Bit 7	Bit 6	Bit 5	Bit 4	Bit 3	Bit 2	Bit 1	Bit 0
0	MDCR (R/W)	Mode Control	PDTX <0>	PDRX <0>	PMODE <X>	SMOD[1] <X>	SMOD[0] <X>	MON <0>	--	--
1	SGCR (R/W)	Signal Control	--	--	--	RLBK <0>	LLBK <0>	RCLKP <0>	TCLKP <0>	FRST <0>
2	ACR1 (R/W)	Advanced Control 1	--	--	--	--	--	--	TPK <0>	DU <0>
3	ACR2 (R/W)	Advanced Control 2	--	--	--	--	--	BST[1] <0>	BST[0] <0>	--
4	MCR2 (R/W)	Mode Control 2	CMI <1>	--	--	--	--	--	--	--
5	STAT (R/C)	Status Monitor	--	--	CMIERR <X>	RXLOS <X>	RXLOL <X>	--	TXLOL <X>	FERR <X>
6-7	--	Reserved	--	--	--	--	--	--	--	--

REGISTER DESCRIPTION (CONTINUED)

LEGEND

TYPE	DESCRIPTION	TYPE	DESCRIPTION
R/O	Read only	R/W	Read or Write
R/C	Read and Clear		

GLOBAL REGISTERS

ADDRESS 0-0: MASTER CONTROL REGISTER

BIT	NAME	TYPE	DFLT VALUE	DESCRIPTION
7	E4	R/W	0	Line Rate Selection: Selects the line rate of all channels as well as the input clock frequency at the CKREFP/N pins. 0: OC-3, STS-3, STM-1 (155.52MHz) 1: E4 (139.264MHz)
6	--	R/W	0	Unused
5	PAR	R/W	0	Serial/Parallel Selection: Selects the interface to the framer. 0: Serial 1: Parallel
4:3	CKSL [1:0]	R/W	X	Reference Clock Frequency Selection: Selects the reference clock frequency input at CKREFP/N pins. Secondary values correspond to E4 frequencies. Default values depend on the pin selection upon reset. 11: 155.52MHz / 139.264MHz 10: 77.76MHz / NA 00: 19.44MHz / 17.408MHz
2:1	--	R/W	0	Unused
0	SRST	R/W	0	Register Soft-Reset: When this bit is set, all registers are reset to their default values. This register bit is self-clearing.

REGISTER DESCRIPTION (CONTINUED)**ADDRESS 0-1: INTERRUPT CONTROL REGISTER**

This register selects the events that would cause the interrupt pins to be activated. User may set as many bits as required.

BIT	NAME	TYPE	DFLT VALUE	DESCRIPTION
7	INPOL	R/W	0	Interrupt Pin Polarity Selection: 0 : Interrupt output is active-low 1 : Interrupt output is active-high
6	--	R/W	0	Reserved
5	MCERR	R/W	1	Receive CMI Code Error Mask (active low): Gates the respective RXCER register bit to the INTRXx interrupt pin. 0: Mask 1: Pass
4	MRLOS	R/W	0	Receive Loss of Signal Error Mask (active low): Gates the respective RXLOS register bit to the INTRXx interrupt pin. 0: Mask 1: Pass
3	MRLOL	R/W	0	Receive Loss of Lock Error Mask (active low): Gates the respective RXLOL register bit to the INTRXx interrupt pin. 0: Mask 1: Pass
2	--	R/W	0	Unused
1	MTLOL	R/W	1	TXLOL Error Mask (active low): Gates the TXLOL register bit to the INTTXx interrupt pin. 0: Mask 1: Pass
0	MFERR	R/W	1	FIERR Error Mask (active low): Gates the respective FIERR register bit to the INTTXx interrupt pin. 0: Mask 1: Pass

REGISTER DESCRIPTION (CONTINUED)

PORT-SPECIFIC REGISTERS

For PA[3:0] = 1-2 = N only. Accessing a register with port address greater than 2 constitutes an invalid command, and the read/write operation will be ignored.

ADDRESS N-0: MODE CONTROL REGISTER

BIT	NAME	TYPE	DFLT VALUE	DESCRIPTION												
7	PDTX	R/W	0	Transmitter Power-Down: 0 : Normal Operation 1 : Power-Down												
6	PDRX	R/W	0	Receiver Power-Down: (Setting PDTX and PDRX for both channels will power down the reference clock generator) 0 : Normal Operation 1 : Power-Down												
5	PMODE	R/W	X	Parallel Mode Interface Selection: When PAR=1 (Master Control Register: bit 5), PMODE selects the source of the transmit parallel input clock, either taken from the framer externally or generated internally. 0: Parallel clock is taken as an input to the transmitter 1: Parallel clock is given as an output from the transmitter												
4	SMOD[1]	R/W	X	Serial Mode Interface Selection: When PAR=0 (Master Control Register: bit 5), SMOD[1:0] configures the transmitter's system interface.												
3	SMOD[0]	R/W	X	<p><u>SMOD[1] SMOD[0]</u></p> <table border="0"> <tr> <td>0</td> <td>0</td> <td>Synchronous clock and data are passed through a FIFO. The CDR is bypassed.</td> </tr> <tr> <td>1</td> <td>0</td> <td>Synchronous data is passed through the CDR and then through the FIFO.</td> </tr> <tr> <td>0</td> <td>1</td> <td>Plesiochronous data is passed through the CDR to recover a clock, but the FIFO is bypassed because the data is not synchronous with the reference clock.</td> </tr> <tr> <td>1</td> <td>1</td> <td>Loop Timing Mode Enable: The recovered receive clock is used as the reference for the transmit section. The transmit data is passed through the CDR, but the FIFO is bypassed.</td> </tr> </table>	0	0	Synchronous clock and data are passed through a FIFO. The CDR is bypassed.	1	0	Synchronous data is passed through the CDR and then through the FIFO.	0	1	Plesiochronous data is passed through the CDR to recover a clock, but the FIFO is bypassed because the data is not synchronous with the reference clock.	1	1	Loop Timing Mode Enable: The recovered receive clock is used as the reference for the transmit section. The transmit data is passed through the CDR, but the FIFO is bypassed.
0	0	Synchronous clock and data are passed through a FIFO. The CDR is bypassed.														
1	0	Synchronous data is passed through the CDR and then through the FIFO.														
0	1	Plesiochronous data is passed through the CDR to recover a clock, but the FIFO is bypassed because the data is not synchronous with the reference clock.														
1	1	Loop Timing Mode Enable: The recovered receive clock is used as the reference for the transmit section. The transmit data is passed through the CDR, but the FIFO is bypassed.														
2	MON	R/W	0	Receive Monitor Mode Enable: 0: Normal Operation 1: Adds 20dB of flat gain to the receive signal before equalization <u>NOTE:</u> Monitor mode is only available in CMI mode.												
1	--	R/W	0	Reserved												
0	--	R/W	1	Reserved												

REGISTER DESCRIPTION (CONTINUED)

ADDRESS N-1: SIGNAL CONTROL REGISTER

BIT	NAME	TYPE	DFLT VALUE	DESCRIPTION																
7:5	--	R/W	0	Reserved																
4	RLBK	R/W	0	Loopback Selection:																
3	LLBK	R/W	0	<table border="0"> <tr> <td colspan="2"><u>RLBK</u></td> <td><u>LLBK</u></td> <td></td> </tr> <tr> <td>0</td> <td>0</td> <td></td> <td>Normal operation</td> </tr> <tr> <td>1</td> <td>0</td> <td></td> <td>Remote Loopback Enable: Recovered receive data and clock are looped back to the transmitter for retransmission. Valid for both parallel and serial modes.</td> </tr> <tr> <td>0</td> <td>1</td> <td></td> <td>Local Loopback Enable: The serial transmit data is looped back and used as the input to the receiver.</td> </tr> </table>	<u>RLBK</u>		<u>LLBK</u>		0	0		Normal operation	1	0		Remote Loopback Enable: Recovered receive data and clock are looped back to the transmitter for retransmission. Valid for both parallel and serial modes.	0	1		Local Loopback Enable: The serial transmit data is looped back and used as the input to the receiver.
<u>RLBK</u>		<u>LLBK</u>																		
0	0		Normal operation																	
1	0		Remote Loopback Enable: Recovered receive data and clock are looped back to the transmitter for retransmission. Valid for both parallel and serial modes.																	
0	1		Local Loopback Enable: The serial transmit data is looped back and used as the input to the receiver.																	
2	RCLKP	R/W	0	Receive Clock Inversion Select: This bit will invert the receive output clock. 0: Normal 1: Invert																
1	TCLKP	R/W	0	Transmit Clock Inversion Select: This bit will invert the transmit input system clock. 0: Normal 1: Invert																
0	FRST	R/W	0	FIFO Reset: 0: Normal operation 1: Reset FIFO pointers to default locations.																

ADDRESS N-2: ADVANCED CONTROL REGISTER 1

BIT	NAME	TYPE	DFLT VALUE	DESCRIPTION
7:2	--	R/W	0	Reserved
1	TPK	R/W	0	Transmit Driver Peaking Enable: <i>TBD</i>
0	DU	R/W	0	Transmit Driver Reverse Peaking Enable: <i>TBD</i>

ADDRESS N-3: ADVANCED CONTROL REGISTER 2

BIT	NAME	TYPE	DFLT VALUE	DESCRIPTION
7:3	----	R/W	10101	Reserved
2:1	BST[1:0]	R/W	00	Transmit Driver Amplitude Boost: <i>TBD</i>
0	----	R/W	0	Reserved

REGISTER DESCRIPTION (CONTINUED)

ADDRESS N-4: MODE CONTROL REGISTER 2

BIT	NAME	TYPE	DFLT VALUE	DESCRIPTION
7	CMI	R/W	1	Line Interface Mode Selection: 0: Optical (LVPECL) 1: Coaxial cable (CMI encoded)
6:0	--	R/W	0	Reserved

ADDRESS N-5: STATUS MONITOR REGISTER

BIT	NAME	TYPE	DFLT VALUE	DESCRIPTION
7	--	R/C	X	Unused
6	--	R/C	X	Reserved
5	CMIERR	R/C	X	Receive CMI Coding Error Indication: This bit is set when the recovered receive CMI data is incorrectly coded. 0: Normal operation 1: CMI code error detected
4	RXLOS	R/C	X	Loss of Signal Indication: 0: Normal operation 1: Loss of signal condition detected <u>NOTE:</u> RXLOS is intended for CMI mode only.
3	RXLLOL	R/C	X	Receive Loss of Lock Indication: 0: Normal operation 1: Recovered receive clock frequency differs from the reference by more than +/- 1000ppm.
2	--	R/C	X	Unused
1	TXLLOL	R/C	X	Transmit Loss of Lock Indication: 0: Normal operation 1: Transmit CDR unlocked
0	FERR	R/C	X	Transmit FIFO Error Indication: This bit is set whenever the internal FERR signal is asserted, indicating that the FIFO is operating at its depth limit. It is reset to 0 when the FRST pin is asserted. 0: Normal operation 1: Transmit FIFO phase error

PIN DESCRIPTION

LEGEND

TYPE	DESCRIPTION	TYPE	DESCRIPTION
A	Analog Pin <i>(Tie unused pins to ground)</i>	PO	LVPECL-Compatible Differential Output <i>(Tie unused pins to supply)</i>
CIT	3-State CMOS Digital Input	CO	CMOS Digital Output <i>(Leave unused pins floating)</i>
CI	CMOS Digital Input <i>(Tie unused pins to ground)</i>	COZ	CMOS Tristate Digital Output <i>(Leave unused pins floating)</i>
CIU	CMOS Digital Input w/ Pull-up	PI	LVPECL-Compatible Differential Input <i>(Tie unused pins to ground)</i>
CID	CMOS Digital Input w/ Pull-down	S	Supply
CIS	CMOS Schmitt Trigger Input <i>(Tie unused pins to ground)</i>	G	Ground

TRANSMITTER PINS

NAME	PIN	TYPE	DESCRIPTION
Plx0D Plx1D Plx2D Plx3D	31, 66 32, 65 33, 64 34, 63	CI	Transmit Data Parallel Input: The four bit CMOS parallel inputs are latched in on the rising edge of the transmit parallel input clock. MSB of the data is transmitted first.
PlxCK	30, 67	CI	Transmit Parallel Clock Input: A 38.88MHz CMOS clock input that should be source synchronous with the reference clock supplied at the CKREFP/N pins.
PTOxCK	35, 62	CO	Transmit Parallel Clock Output: A 38.88MHz CMOS clock output that is intended to latch in synchronous parallel data.
SlxDP SlxDN	10, 87 11, 86	PI	Transmit Serial Data Input: This differential input is clocked in on the rising edge of the transmit serial input clock. If source synchronous with the reference clock, this data can be input to a FIFO, otherwise the clock and data can be transmitted directly. A CDR can be multiplexed in to the transmit path if no serial clock is available.
SlxCKP SlxCKN	7, 90 8, 89	PI	Transmit Serial Clock Input: A 155.52MHz synchronous differential input clock used to clock in the serial data
CMIxP CMIxN	121, 104 122, 103	A	Transmit Serial CMI Data Output: A CMI encoded data signal conforming to the relevant pulse templates
TXxCKP TXxCKN	124, 101 125, 100	PO	Transmit Serial Clock Output: A 2x line rate LVPECL clock output used to clock out the transmit data
ECLxP ECLxN	127, 98 128, 97	PO	Transmit Serial LVPECL Data Output: Transmit NRZ data

PIN DESCRIPTION (CONTINUED)

RECEIVER PINS

NAME	PIN	TYPE	DESCRIPTION
POx0D POx1D POx2D POx3D	46, 51 45, 52 42, 55 41, 56	CO	Receive Data Parallel Output: The four bit CMOS parallel outputs are clocked out on the falling edge of the receive parallel output clock. The MSB of the output is received first.
POxCK	38, 59	CO	Receive Parallel Clock Output: A 38.88MHz CMOS clock output generated by dividing down the recovered receive clock. The output is multiplexed in from the divided down reference clock whenever LOSx is high.
SOxDP SOxDN	28, 69 29, 68	PO	Receive Serial Data Output: Recovered receive serial data
SOxCKP SOxCKN	25, 72 26, 71	PO	Receive Serial Clock Output: Recovered receive serial clock
RXxP RXxN	118, 107 119, 106	A/ PI	Receive Serial CMI or LVPECL Input: The input signal is either transformer coupled for CMI data or at LVPECL levels for NRZ data

REFERENCE AND STATUS PINS

NAME	PIN	TYPE	DESCRIPTION
CKREFP CKREFN	111 110	PI	Reference Clock Input: A differential 139.264MHz, 155.52MHz differential clock input at CKREFP/N or a single-ended 17.408MHz, 19.44MHz, 77.78MHz CMOS clock input at CKREFP (tie CKREFN to ground when unused). All reference clocks are +/- 20ppm.
LOS1 LOS2	80 19	CO	Loss of Signal: Standards compliant loss of signal indicator. To be used for electrical CMI interfaces only.
LOL1 LOL2	79 20	CO	Loss of Lock: This condition is met when the recovered clock frequency differs from the reference clock frequency by more than +/- 1000ppm.
INTTX! INTTX@	88 9	CO	Transmitter Fault Interrupt Flag (active low): When a transmitter error event occurs (as defined in the Interrupt Control Register Description), the INTTXx pin will change state to indicate an interrupt. The interrupt is cleared by a read to the STAT Register or issue of a FRSTx FIFO reset pulse if the FIERRx signal caused the interrupt. The default interrupt condition is a loss of lock in the transmitter CDR.
INTRX! INTRX@	70 27	CO	Receiver Fault Interrupt Flag (active low): When a receiver error event occurs (as defined in the Interrupt Control Register Description), the INTRXx pin will change state to indicate an interrupt. The interrupt is cleared by a read to the STAT Register. The default interrupt condition is a CMI line code violation.
POR	83	A	Power-On Reset (active low): See Power-On Reset description on use of this pin.

PIN DESCRIPTION (CONTINUED)

CONTROL PINS

NAME	PIN	TYPE	DESCRIPTION
FRST	78	CIT	<p>FIFO Phase-Initialization Control: Should normally be floating. When asserted, the transmit FIFO pointers are reset to the respective “centered” states. Also resets the FIERR interrupt bit. De-assertion edge of FRSTx will resume FIFO operation.</p> <ul style="list-style-type: none"> • <u>Low</u>: Channel 1 FRST assertion • <u>Float</u>: Normal • <u>High</u>: Channel 2 FRST assertion
LPBKx	17, 18	CIT	<p>Loopback Selection:</p> <ul style="list-style-type: none"> • <u>Low</u>: Normal operation • <u>Float</u>: Remote Loopback Enable: Recovered receive data and clock are looped back to the transmitter for retransmission. • <u>High</u>: Local Loopback Enable: The serial transmit data is looped back and used as the input to the receiver.
CKMODE	15	CIT	<p>Clock Mode Selection: Selects the method of inputting transmit data into the chip.</p> <p>In PARALLEL mode (SDI_PAR high):</p> <ul style="list-style-type: none"> • <u>Low/Float</u>: Parallel transmit clock is input to the 78P2352 • <u>High</u>: Parallel transmit clock is output from the 78P2352 <p>In SERIAL mode (SDI_PAR low):</p> <ul style="list-style-type: none"> • <u>Low</u>: Reference clock is synchronous to transmit clock and data. Data is passed through a FIFO • <u>Float</u>: Reference clock is synchronous to transmit data. Clock is recovered with a CDR and data is passed through a FIFO • <u>High</u>: Reference clock is plesiochronous to transmit data. Clock is recovered with a CDR and the FIFO is bypassed
TXOUT1	1	CIT	<p>CMI Driver Peaking Control: <i>Functionality TBD. Should be floating for normal operation</i></p>
TXOUT0	2	CIT	<p>CMI Driver Amplitude Control: <i>Functionality TBD. Should be tied low for normal operation</i></p>
TXPD	14	CID	<p>Transmitter Power Down: When high, powers down the transmitter on both channels.</p>
SPSL	77	CID	<p>Serial Port Selection: When high, chip is controlled through the serial port.</p>
CKSL	81	CIT	<p>Reference Clock Frequency Selection: Selects the reference frequency that is supplied at the CKREFP/N pins. Its level is read in only at power-up or on the rising edge of a reset signal at the POR pin.</p> <ul style="list-style-type: none"> • <u>Low</u>: 19.44MHz or 17.408MHz • <u>Float</u>: 77.76MHz • <u>High</u>: 155.52MHz or 139.264MHz

PIN DESCRIPTION (CONTINUED)

SERIAL-PORT PINS

NAME	PIN	TYPE	DESCRIPTION
SEN_CMI	95	CI	<p>[SPSL=1] Serial-Port Enable: High during read and write operations. Low disables the serial port. While SEN is low, SDO remains in high impedance state, and SDI and SCK activities are ignored.</p> <p>[SPSL=0] Medium Select: <u>Low</u>: ECL (NRZ) mode <u>Float</u>: CMI mode (input/output polarity inverted) <u>High</u>: CMI mode (normal input/output)</p>
SCK_MON	96	CIS	<p>[SPSL=1] Serial Clock: Controls the timing of SDI and SDO.</p> <p>[SPSL=0] Receive Monitor Mode Enable: When high, adds 20dB of flat gain to the incoming signal before equalization. NOTE: Channel specific monitor modes can only be enabled through the serial port. Rx Monitor Mode is only available in CMI mode</p>
SDI_PAR	94	CI	<p>[SPSL=1] Serial Data Input: Inputs mode and address information. Also inputs register data during a Write operation. Both address and data are input least significant bit first.</p> <p>[SPSL=0] Data Width Select: Selects 4 bit parallel (input high) or serial mode (input low)</p>
SDO_E4	93	COZ/ CI	<p>[SPSL=1] Serial Data Output: Outputs register information during a Read operation. Data is output least significant bit first</p> <p>[SPSL=0] Rate Select: Selects E4 operation (input high) or STM1/STS3 operation (input low)</p>

POWER AND GROUND PINS

It is recommended that all supply pins be connected to a single power supply plane and all ground pins be connected to a single ground plane.

NAME	PIN	TYPE	DESCRIPTION
VCC	5, 12, 21, 74, 85, 92, 99, 105, 109, 116, 120, 126	S	Power Supply
VDD	23, 37, 40, 44, 48, 49, 53, 57, 60	S	CMOS Driver Supply
GND	6, 13, 16, 22, 73, 82, 84, 91, 102, 108, 112, 113, 114, 115, 117, 123	G	Ground
VSS	24, 36, 39, 43, 47, 50, 54, 58, 61	G	CMOS Driver Ground

ELECTRICAL SPECIFICATIONS**ABSOLUTE MAXIMUM RATINGS**

Operation beyond these limits may permanently damage the device.

PARAMETER	RATING
Supply Voltage (Vdd)	-0.5 to 4.0 VDC
Storage Temperature	-65 to 150 °C
Junction Temperature	-40 to 125 °C
Theta-JA (θ_{JA}) – Still Air	50 °C/W
Pin Voltage (CMIxP, CMIxN)	Vdd + 1.5 VDC
Pin Voltage (all other pins)	-0.3 to (Vdd+0.6) VDC
Pin Current	±100 mA

RECOMMENDED OPERATING CONDITIONS

Unless otherwise noted all specifications are valid over these temperatures and supply voltage ranges.

PARAMETER	RATING
DC Voltage Supply (Vdd)	3.15 to 3.45 VDC
Ambient Operating Temperature	-40 to 85°C

DC CHARACTERISTICS:

PARAMETER	SYMBOL	CONDITIONS	MIN	NOM	MAX	UNIT
Supply Current (including transmitter current through transformer)	I _{dd}	VP = 3.3V STM-1 mode CMI mode Max. cable length		TBD		mA
Supply Current	I _{dde}	VP=3.3V STM-1 mode NRZ (optical) mode		TBD		mA
Supply Current	I _{ddr}	VP = 3.3V Transmitter disabled STM-1 mode CMI mode Max. cable length		TBD		mA
Supply Current per Port (including transmitter current through transformer)	I _{ddx}	VP = 3.3V STM-1 mode CMI mode Max. cable length		TBD		mA

ELECTRICAL SPECIFICATIONS (continued)**ANALOG PINS CHARACTERISTICS:**

The following table is provided for informative purpose only. Not tested in production.

PARAMETER	SYMBOL	CONDITIONS	MIN	NOM	MAX	UNIT
RXxP and RXxN Common-Mode Bias Voltage	Vblin	Ground Reference		2.1		V
RXxP and RXxN Differential Input Impedance	Rilin			10		k Ω
Analog Input/Output Capacitance	Cin			8		pF

DIGITAL I/O CHARACTERISTICS:

Pins of type CI, CIU, CID:

PARAMETER	SYMBOL	CONDITIONS	MIN	NOM	MAX	UNIT
Input Voltage Low	Vil				0.8	V
Input Voltage High	Vih		2.0			V
Input Current	Iil, Iih			0		μ A
Pull-up Resistance	Rpu	Type CIU only		70		k Ω
Pull-down Resistance	Rpd	Type CID only		58		k Ω
Input Capacitance	Cin			8		pF

Pins of type CIS:

PARAMETER	SYMBOL	CONDITIONS	MIN	NOM	MAX	UNIT
Low-to-High Threshold	Vt+			1.5		V
High-to-Low Threshold	Vt-			0.9		V
Input Current	Iil, Iih			0		μ A
Input Capacitance	Cin			8		pF

Pins of type CO and COZ:

PARAMETER	SYMBOL	CONDITIONS	MIN	NOM	MAX	UNIT
Output Voltage Low	Vol	Iol = 8mA			0.4	V
Output Voltage High	Voh	Ioh = -8mA	2.4			V
Output Transition Time	Tt	CL = 20pF			4	ns
Tri-state Output Leakage Current	Iz	Type COZ only		0		μ A

Pins of type PO:

PARAMETER	SYMBOL	CONDITIONS	MIN	NOM	MAX	UNIT
Output Voltage Low	Vol	Vdd referenced		-1.4		V
Output Voltage High	Voh	Vdd referenced		-0.9		V
Rise Time	Tr			1		ns
Fall Time	Tf			1		ns

ELECTRICAL SPECIFICATIONS (continued)

SERIAL-PORT TIMING CHARACTERISTICS:

PARAMETER	SYMBOL	CONDITION	MIN	TYP	MAX	UNIT
SDI to SCK setup time	t_{su}		2			ns
SDI to SCK hold time	t_h		2			ns
SCK to SDO propagation delay	t_{prop}				3	ns

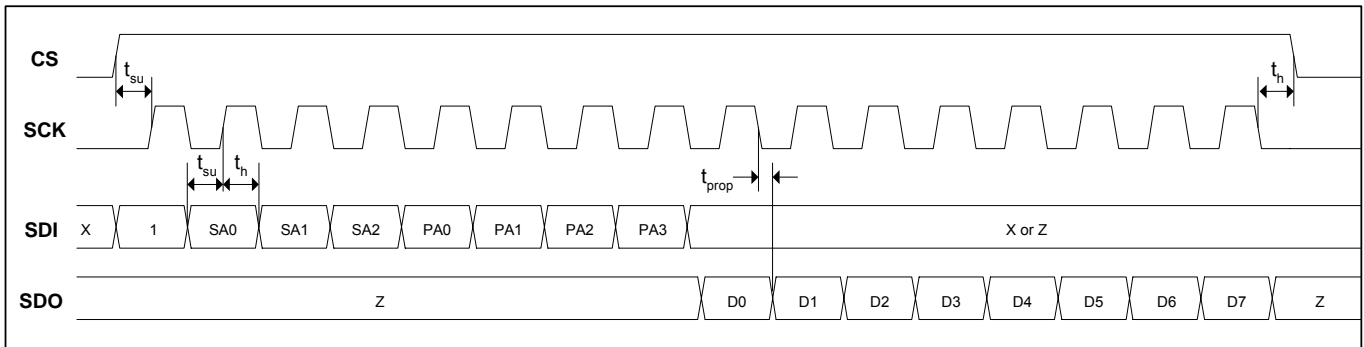


Figure 8: Read Operation

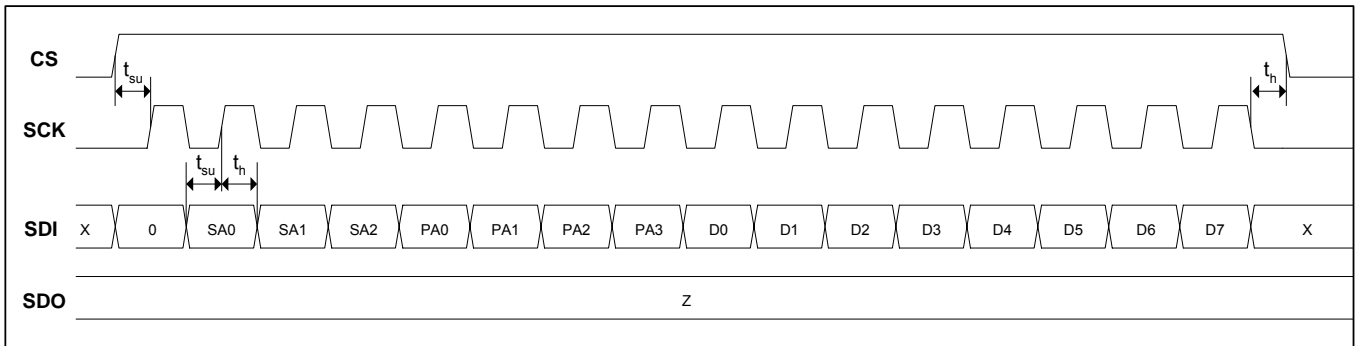


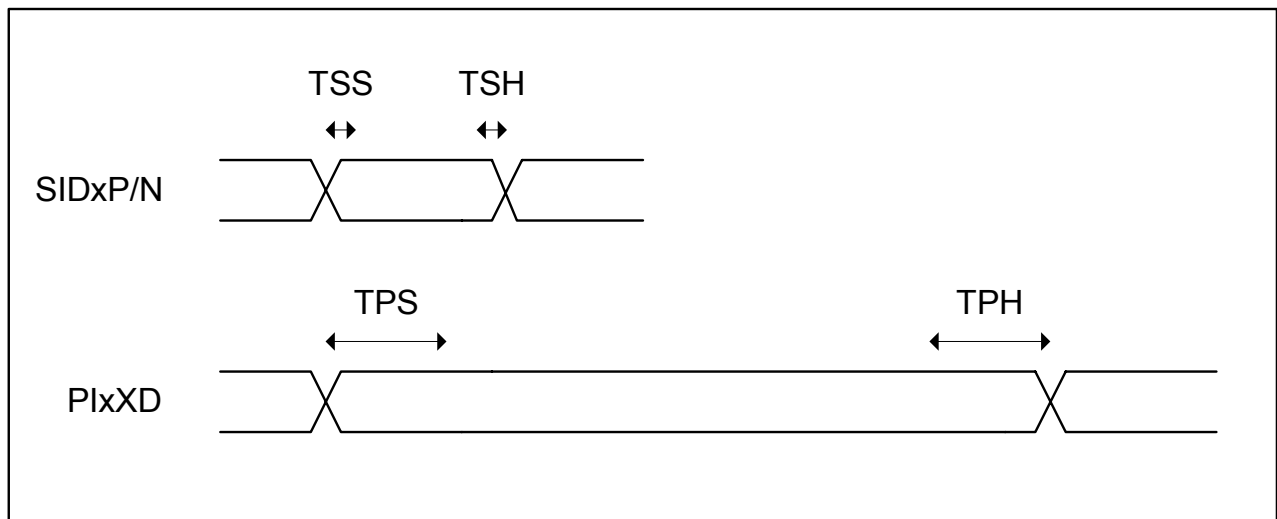
Figure 9: Write Operation

ELECTRICAL SPECIFICATIONS (continued)

TRANSMITTER TIMING CHARACTERISTICS:

PARAMETER	SYMBOL	CONDITIONS	MIN	NOM	MAX	UNIT
Clock Duty Cycle	TTCF/TTC			50		%
Transition Time	TTCT	10%-90%		1		ns
Setup Time	TPS	Parallel mode	4			ns
Hold Time	TPH	Parallel mode	4			ns
Setup Time	TSS	Serial mode	1			ns
Hold Time	TSH	Serial mode	1			ns

TIMING DIAGRAM: Transmitter Waveforms



ELECTRICAL SPECIFICATIONS (continued)

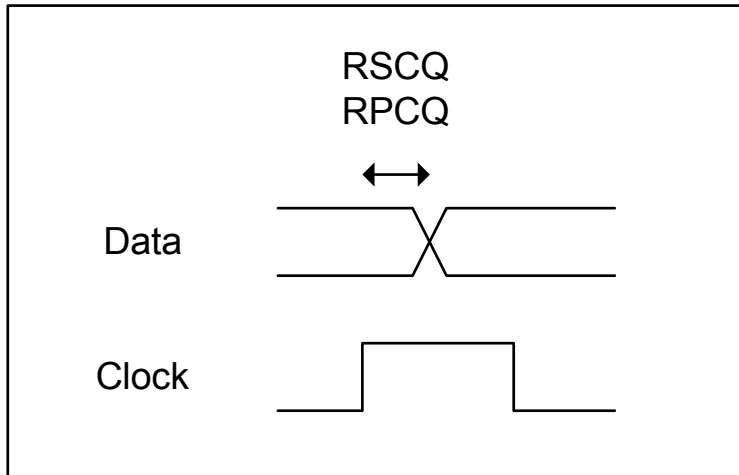
REFERENCE CLOCK CHARACTERISTICS:

PARAMETER	SYMBOL	CONDITIONS	MIN	NOM	MAX	UNIT
CKREF Duty Cycle	--		40		60	%
CKREF Frequency Stability	--	w.r.t. line-rate frequency	-20		+20	ppm

RECEIVER TIMING CHARACTERISTICS:

PARAMETER	SYMBOL	CONDITIONS	MIN	NOM	MAX	UNIT
Transition Time	TRCT			1		ns
Receive Clock Duty Cycle	TRCF/TRC			50		%
Clock to Q	RSCQ	Serial mode		0.6		ns
Clock to Q	RPCQ	Parallel mode		0.6		ns

TIMING DIAGRAM: Receive Waveforms



ELECTRICAL SPECIFICATIONS (continued)

TRANSMITTER SPECIFICATIONS FOR CMI INTERFACE

Bit Rate: 139.264Mbit/s ± 15ppm or 155.52Mbits/s ± 20ppm

Code: coded mark inversion (CMI)

Relevant Specification: ITU-T G.703

With the coaxial output port driving a 75Ω load, the output pulses conform to the templates in Figures 10, 11, 12, and 13. These specifications are tested during production test.

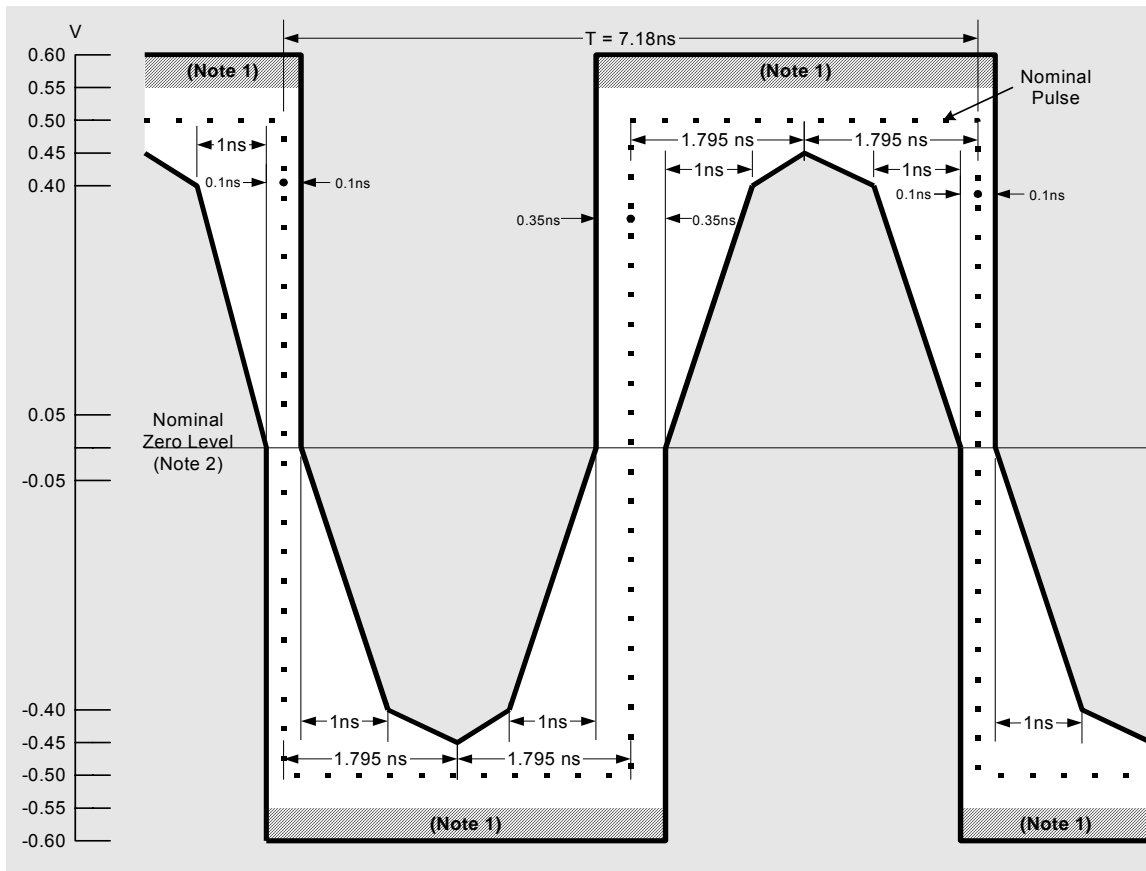
PARAMETER	CONDITION	MIN	NOM	MAX	UNIT
Peak-to-peak Output Voltage	Template, steady state	0.9		1.1	V
Rise/ Fall Time	10-90%			2	ns
Transition Timing Tolerance	Negative Transitions	-0.1		0.1	ns
	Positive Transitions at Interval Boundaries	-0.5		0.5	ns
	Positive Transitions at mid-interval	-0.35		0.35	ns

The following specifications are not tested during production test. They are included for information only.

Note that the return loss depends on the board layout and the particular transformer used.

PARAMETER	CONDITION	MIN	NOM	MAX	UNIT
Return Loss	7MHz to 240MHz	15			dB

ELECTRICAL SPECIFICATIONS (continued)



Note 1 – The maximum “steady state” amplitude should not exceed the 0.55V limit. Overshoots and other transients are permitted to fall into the shaded area bounded by the amplitude levels 0.55V and 0.6V, provided that they do not exceed the steady state level by more than 0.05V.

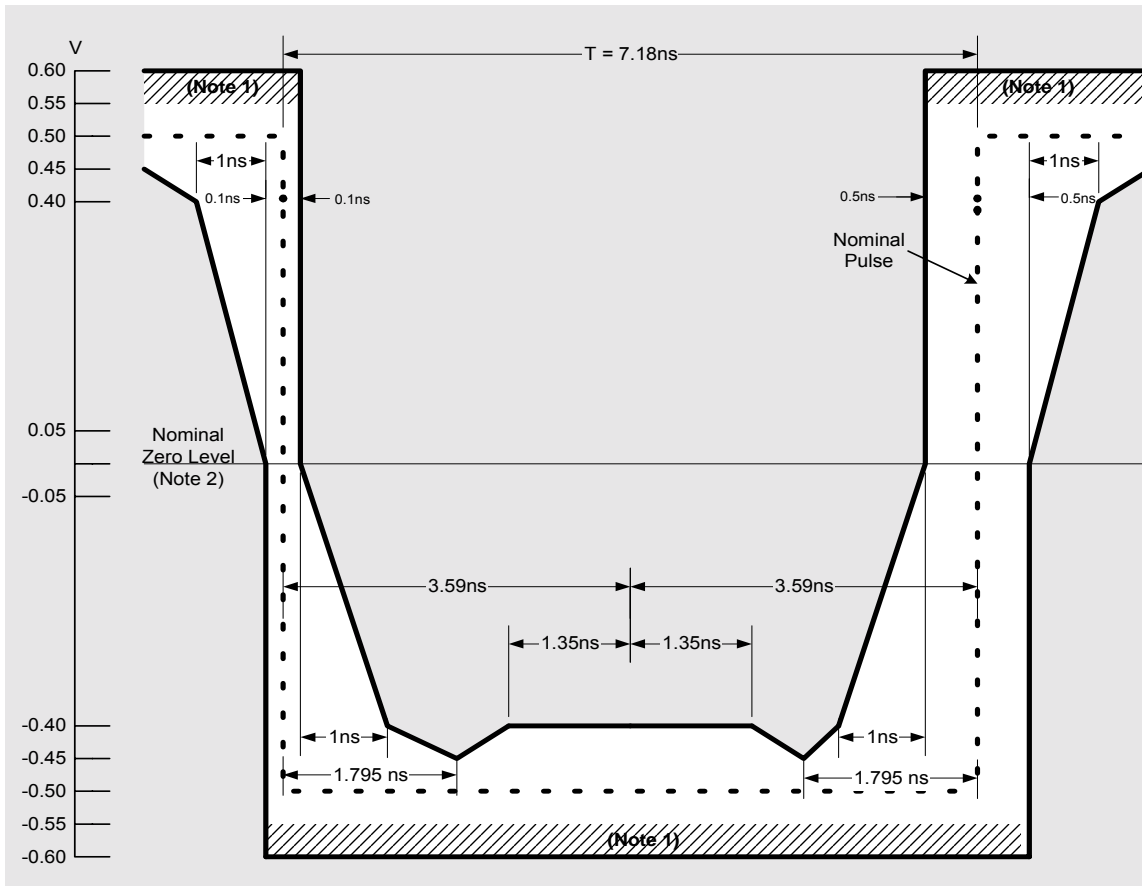
Note 2 – For all measurements using these masks, the signal should be AC coupled, using a capacitor of not less than 0.01 μ F, to the input of the oscilloscope used for measurements. The nominal zero level for both masks should be aligned with the oscilloscope trace with no input signal. With the signal then applied, the vertical position of the trace can be adjusted with the objective of meeting the limits of the masks. Any such adjustment should be the same for both masks and should not exceed ± 0.05 V. This may be checked by removing the input signal again and verifying that the trace lies with ± 0.05 V of the nominal zero level of the masks.

Note 3 – Each pulse in a coded pulse sequence should meet the limits of the relevant mask, irrespective of the state of the preceding or succeeding pulses, with both pulse masks fixed in the same relation to a common timing reference, i.e. with their nominal start and finish edges coincident. The masks allow for HF jitter caused by intersymbol interference in the output stage, but not for jitter present in the timing signal associated with the source of the interface signal. When using an oscilloscope technique to determine pulse compliance with the mask, it is important that successive traces of the pulses overlay in order to suppress the effects of low frequency jitter. This can be accomplished by several techniques [e.g. a) triggering the oscilloscope on the measured waveform or b) providing both the oscilloscope and the pulse output circuits with the same clock signal].

Note 4 – For the purpose of these masks, the rise time and decay time should be measured between -0.4 V and 0.4 V, and should not exceed 2ns.

Figure 10 – Mask of a Pulse corresponding to a binary Zero in E4 mode

ELECTRICAL SPECIFICATIONS (continued)



Note 1 – The maximum “steady state” amplitude should not exceed the 0.55V limit. Overshoots and other transients are permitted to fall into the shaded area bounded by the amplitude levels 0.55V and 0.6V, provided that they do not exceed the steady state level by more than 0.05V.

Note 2 – For all measurements using these masks, the signal should be AC coupled, using a capacitor of not less than 0.01 μ F, to the input of the oscilloscope used for measurements. The nominal zero level for both masks should be aligned with the oscilloscope trace with no input signal. With the signal then applied, the vertical position of the trace can be adjusted with the objective of meeting the limits of the masks. Any such adjustment should be the same for both masks and should not exceed ± 0.05 V. This may be checked by removing the input signal again and verifying that the trace lies with ± 0.05 V of the nominal zero level of the masks.

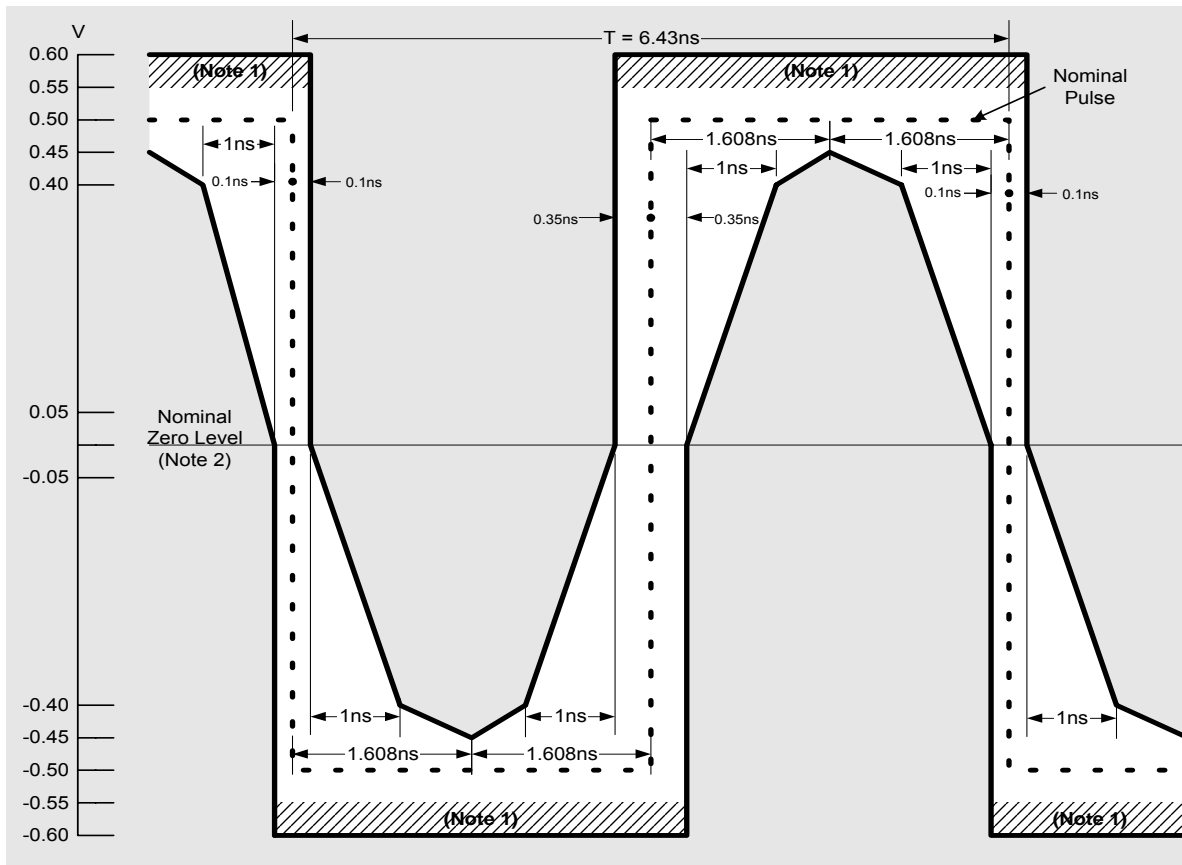
Note 3 – Each pulse in a coded pulse sequence should meet the limits of the relevant mask, irrespective of the state of the preceding or succeeding pulses, with both pulse masks fixed in the same relation to a common timing reference, i.e. with their nominal start and finish edges coincident. The masks allow for HF jitter caused by intersymbol interference in the output stage, but not for jitter present in the timing signal associated with the source of the interface signal. When using an oscilloscope technique to determine pulse compliance with the mask, it is important that successive traces of the pulses overlay in order to suppress the effects of low frequency jitter. This can be accomplished by several techniques [e.g. a) triggering the oscilloscope on the measured waveform or b) providing both the oscilloscope and the pulse output circuits with the same clock signal].

Note 4 – For the purpose of these masks, the rise time and decay time should be measured between -0.4 V and 0.4 V, and should not exceed 2ns.

Note 5 – The inverse pulse will have the same characteristics, noting that the timing tolerance at the level of the negative and positive transitions are ± 0.1 ns and ± 0.5 ns respectively.

Figure 11 – Mask of a Pulse corresponding to a binary One in E4 mode.

ELECTRICAL SPECIFICATIONS (continued)



Note 1 – The maximum “steady state” amplitude should not exceed the 0.55V limit. Overshoots and other transients are permitted to fall into the shaded area bounded by the amplitude levels 0.55V and 0.6V, provided that they do not exceed the steady state level by more than 0.05V.

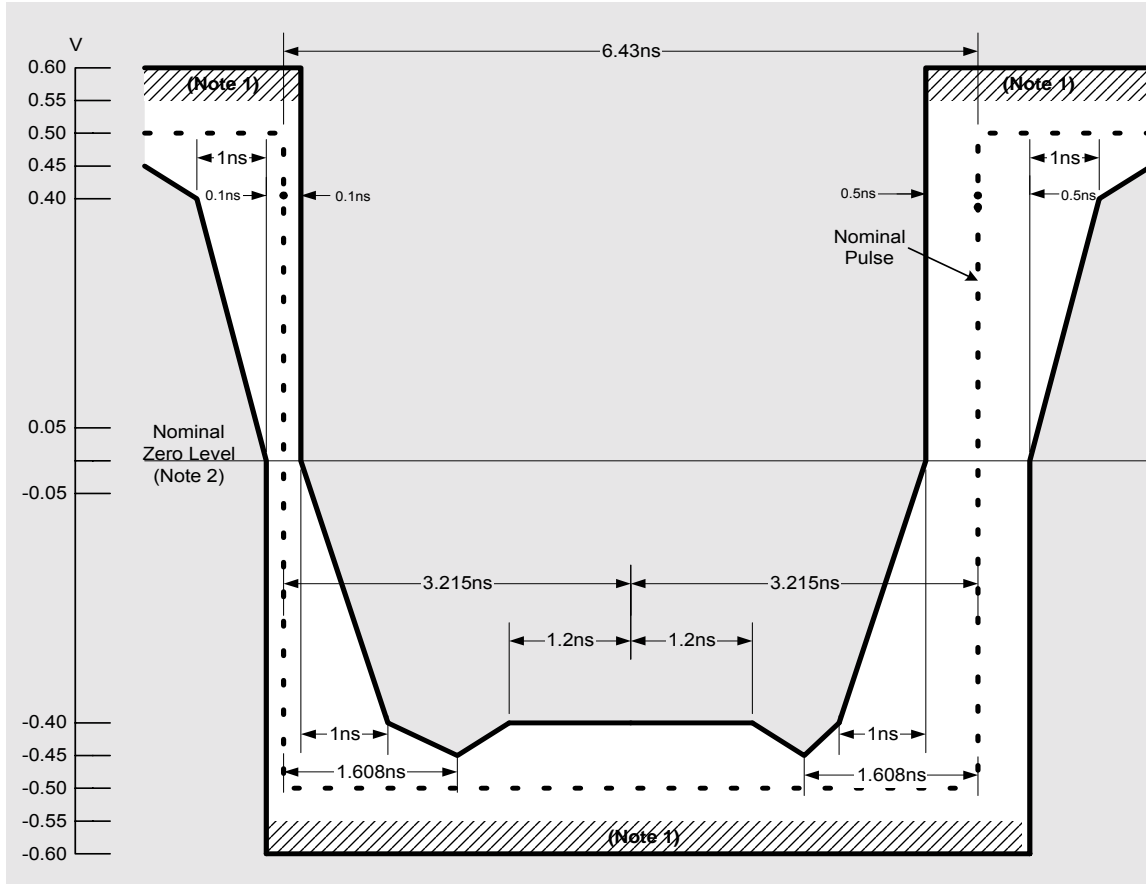
Note 2 – For all measurements using these masks, the signal should be AC coupled, using a capacitor of not less than 0.01 μ F, to the input of the oscilloscope used for measurements. The nominal zero level for both masks should be aligned with the oscilloscope trace with no input signal. With the signal then applied, the vertical position of the trace can be adjusted with the objective of meeting the limits of the masks. Any such adjustment should be the same for both masks and should not exceed ± 0.05 V. This may be checked by removing the input signal again and verifying that the trace lies with ± 0.05 V of the nominal zero level of the masks.

Note 3 – Each pulse in a coded pulse sequence should meet the limits of the relevant mask, irrespective of the state of the preceding or succeeding pulses, with both pulse masks fixed in the same relation to a common timing reference, i.e. with their nominal start and finish edges coincident. The masks allow for HF jitter caused by intersymbol interference in the output stage, but not for jitter present in the timing signal associated with the source of the interface signal. When using an oscilloscope technique to determine pulse compliance with the mask, it is important that successive traces of the pulses overlay in order to suppress the effects of low frequency jitter. This can be accomplished by several techniques [e.g. a) triggering the oscilloscope on the measured waveform or b) providing both the oscilloscope and the pulse output circuits with the same clock signal].

Note 4 – For the purpose of these masks, the rise time and decay time should be measured between -0.4 V and 0.4 V, and should not exceed 2ns.

Figure 12 – Mask of a Pulse corresponding to a binary Zero in STS-3/STM-1 mode.

ELECTRICAL SPECIFICATIONS (continued)



Note 1 – The maximum “steady state” amplitude should not exceed the 0.55V limit. Overshoots and other transients are permitted to fall into the shaded area bounded by the amplitude levels 0.55V and 0.6V, provided that they do not exceed the steady state level by more than 0.05V.

Note 2 – For all measurements using these masks, the signal should be AC coupled, using a capacitor of not less than 0.01 μ F, to the input of the oscilloscope used for measurements. The nominal zero level for both masks should be aligned with the oscilloscope trace with no input signal. With the signal then applied, the vertical position of the trace can be adjusted with the objective of meeting the limits of the masks. Any such adjustment should be the same for both masks and should not exceed ± 0.05 V. This may be checked by removing the input signal again and verifying that the trace lies with ± 0.05 V of the nominal zero level of the masks.

Note 3 – Each pulse in a coded pulse sequence should meet the limits of the relevant mask, irrespective of the state of the preceding or succeeding pulses, with both pulse masks fixed in the same relation to a common timing reference, i.e. with their nominal start and finish edges coincident. The masks allow for HF jitter caused by intersymbol interference in the output stage, but not for jitter present in the timing signal associated with the source of the interface signal. When using an oscilloscope technique to determine pulse compliance with the mask, it is important that successive traces of the pulses overlay in order to suppress the effects of low frequency jitter. This can be accomplished by several techniques [e.g. a) triggering the oscilloscope on the measured waveform or b) providing both the oscilloscope and the pulse output circuits with the same clock signal].

Note 4 – For the purpose of these masks, the rise time and decay time should be measured between -0.4 V and 0.4 V, and should not exceed 2ns.

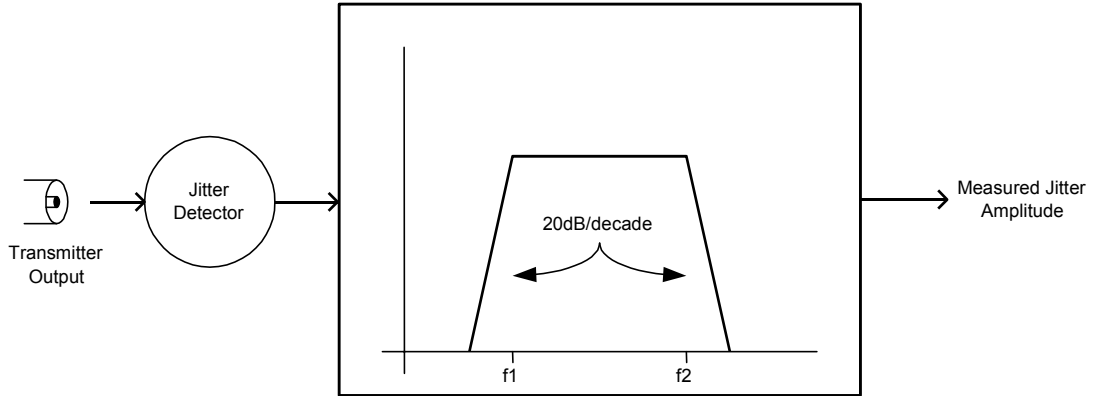
Note 5 – The inverse pulse will have the same characteristics, noting that the timing tolerance at the level of the negative and positive transitions are ± 0.1 ns and ± 0.5 ns respectively.

Figure 13 – Mask of a Pulse corresponding to a binary One in STS-3/STM-1 mode

ELECTRICAL SPECIFICATIONS (continued)

TRANSMITTER OUTPUT JITTER

The transmit jitter specification ensures compliance with ITU-T G.813, G.823, G.825 and G.958; ANSI T1.102-1993 and T1.105.03-1994; and GR-253-CORE for all supported rates. Transmit output jitter is not tested during production test.



PARAMETER	CONDITION	MIN	NOM	MAX	UNIT
Transmitter Output Jitter	CMI Mode; 200 Hz to 3.5 MHz, measured with respect to CKREF for 60s			0.075	U _{lpp}
	NRZ (optical) Mode; 12 kHz to 1.3 MHz, measured with respect to CKREF			0.01	U _{lrms}

ELECTRICAL SPECIFICATIONS (continued)

RECEIVER (Transformer-coupled)

PARAMETER	CONDITION	MIN	TYP	MAX	UNIT
Peak Differential Input Amplitude, RXxP and RXxN	CMI mode; MON=0		500		mVpk
Peak Differential Input Amplitude, RXxP and RXxN	CMI mode; MON=1		50		mVpk
Flat-loss Tolerance	CMI mode; MON=0 All valid cable lengths.		2		dB
Receive Clock Jitter	STM-1 mode; CMI mode with maximum cable a) Normal receive mode b) Remote loopback mode			0.1 0.07	U _{lpp} U _{lpp}

RECEIVER SPECIFICATIONS FOR CMI INTERFACE

The input signal is assumed compliant with ITU-T G.703 and can be attenuated by the dispersive loss of a cable. The minimum cable loss is 0dB and the maximum is -12dB at 70MHz.

The "Worst Case" line corresponds to the ITU-T G.703 recommendation. The "Typical" line corresponds to a typical installation referred to in ANSI T1.102-1993. The receiver is tested using the cable model. It is a lumped element approximation of the "Worst Case" line.

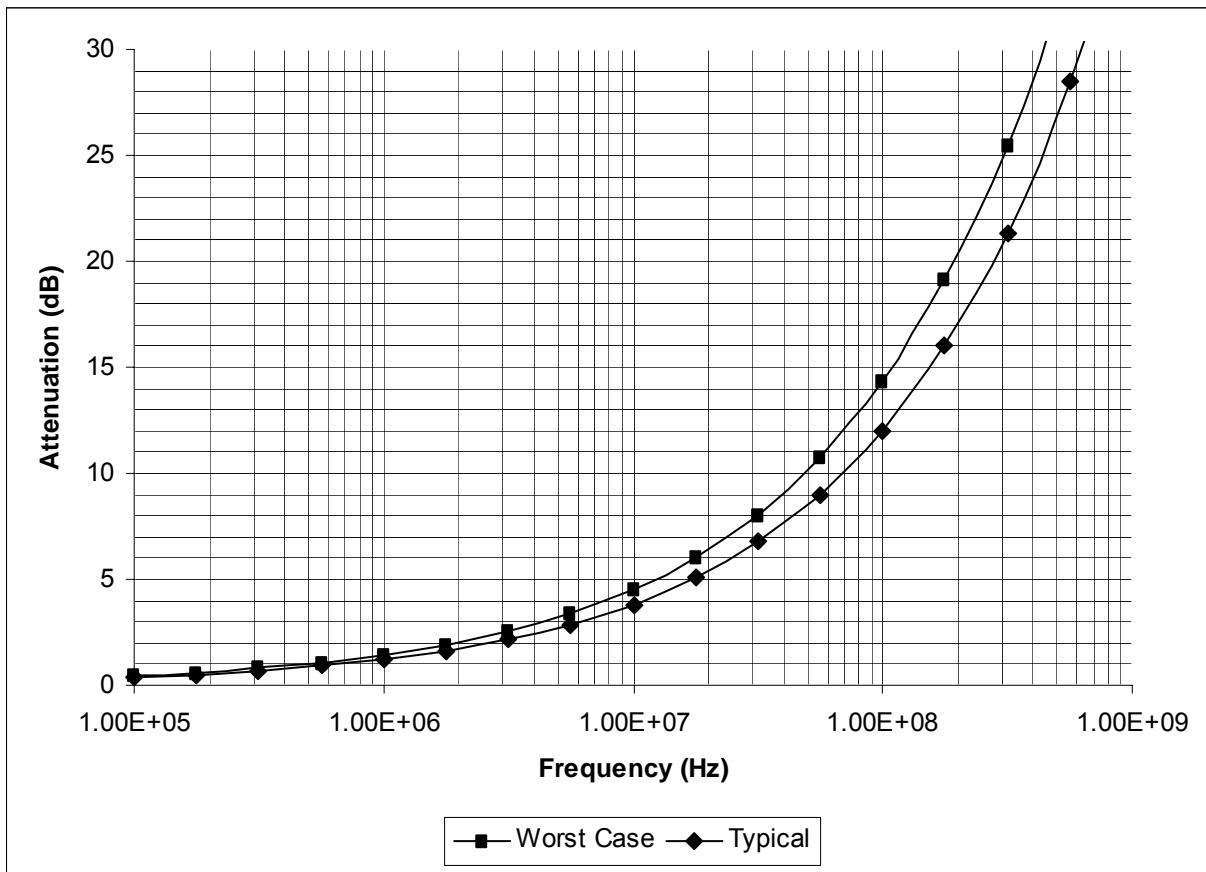


Figure 14: Typical and worst-case Cable attenuation

ELECTRICAL SPECIFICATIONS (continued)

RECEIVER JITTER TOLERANCE

The 78P2352 is compliant with all relevant jitter tolerance specifications shown in Figures 15, 16. STS-3/OC-3 jitter tolerance specifications are in ANSI T1.105.03-1994 and Telcordia GR-253-CORE. STM-1 (optical) jitter tolerance specifications are in ITU-T G.813, G.825, and G.958. STM-1e (electrical) jitter tolerance specifications are in ITU-T G.825. E4 specifications are found in ITU-T G.823. Receive jitter tolerance is not tested during production test.

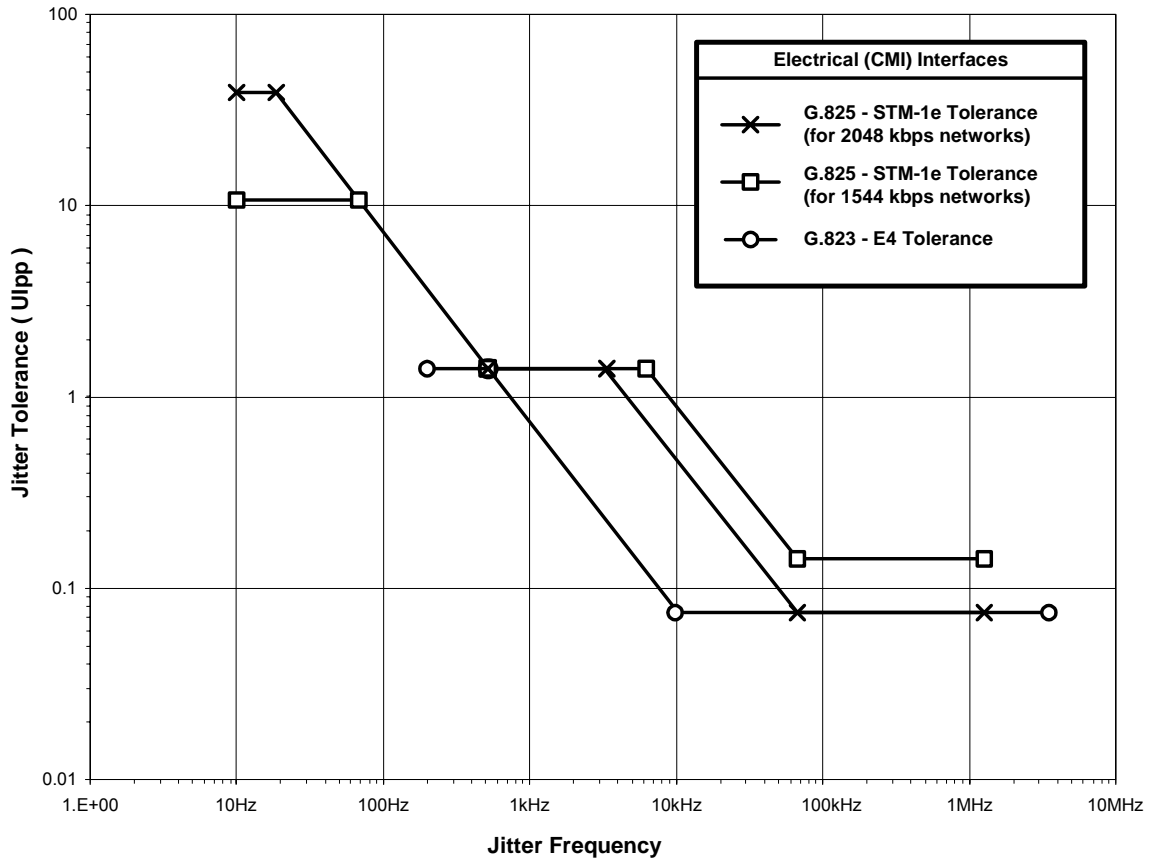


Figure 15: Jitter Tolerance - electrical (CMI) interfaces

PARAMETER	CONDITION	MIN	NOM	MAX	UNIT
E4 Jitter Tolerance	200Hz to 500Hz	1.5			Ujpp
	10kHz to 3.5MHz	0.075			
STM-1e Jitter Tolerance	10Hz to 19.3Hz	38.9			Ujpp
	68.7Hz to 6.5kHz	1.5			
	65kHz to 1.3MHz	0.15			

ELECTRICAL SPECIFICATIONS (continued)

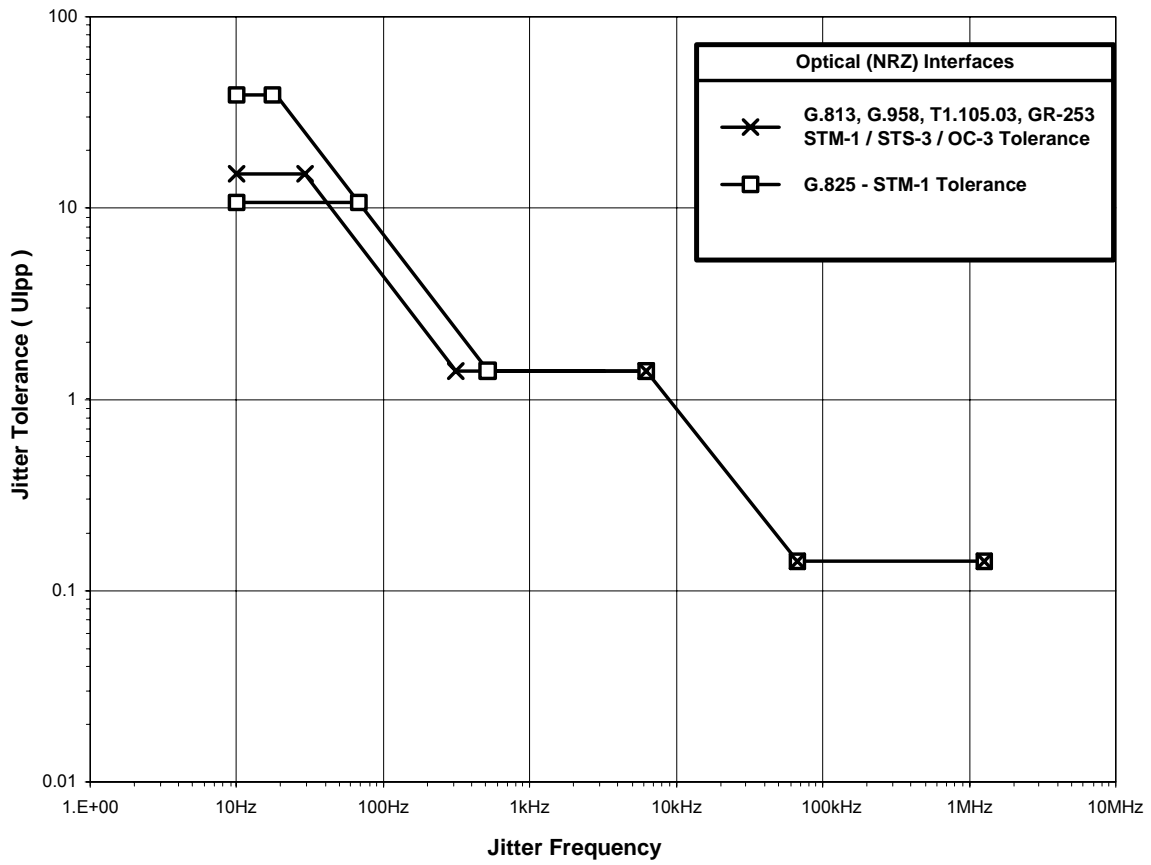


Figure 16: Jitter Tolerance - optical (NRZ) interfaces

PARAMETER	CONDITION	MIN	NOM	MAX	UNIT
OC-3/STS-3/STM-1 (optical) Jitter Tolerance	10Hz to 19.3Hz	38.9			Ujpp
	68.7Hz to 6.5kHz	1.5			
	65kHz to 1.3MHz	0.15			

ELECTRICAL SPECIFICATIONS (continued)

RECEIVER JITTER TRANSFER FUNCTION

The receiver clock recovery loop filter characteristics such that the receiver has the following transfer function. The corner frequency of the PLL is approximately 120 kHz. Receiver jitter transfer function is not tested during production test.

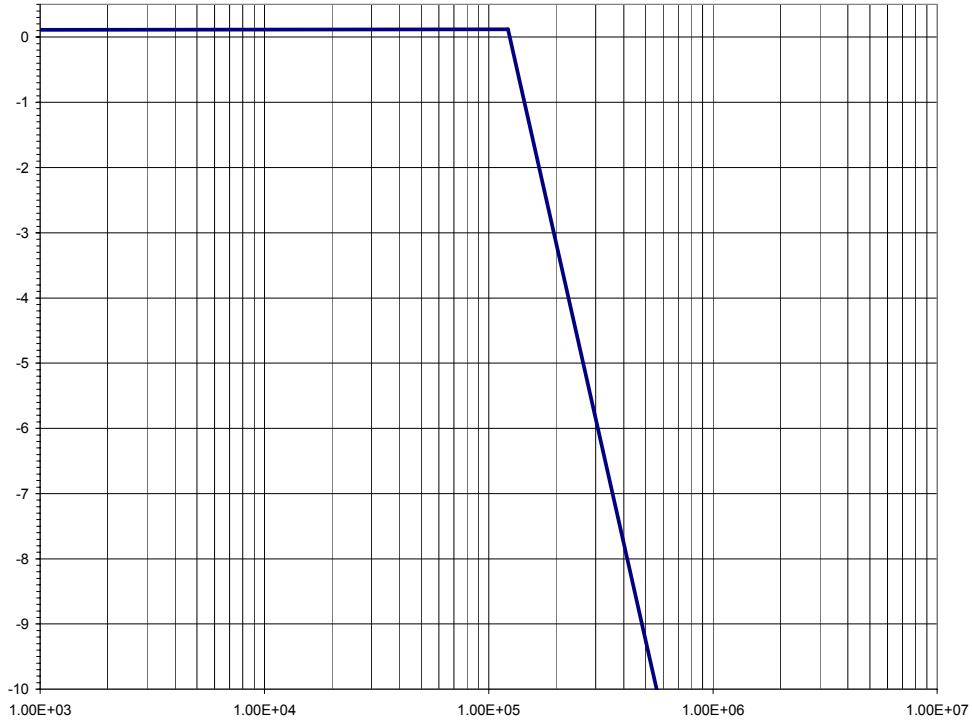
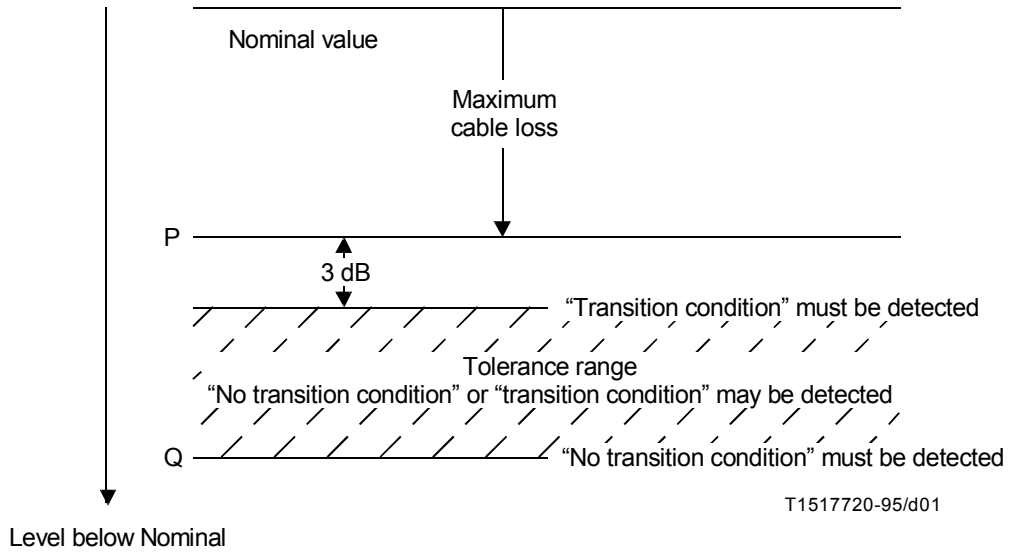


Figure 17: Jitter Transfer

PARAMETER	CONDITION	MIN	NOM	MAX	UNIT
Receiver Jitter transfer function	below 120 kHz			0.1	dB
Jitter transfer function roll-off			20		dB per decade

ELECTRICAL SPECIFICATIONS (continued)

CMI Mode Loss of Signal Condition



NOTES

- 1 The signal level P is (maximum cable loss +3) dB below nominal.
- 2 The signal level Q is greater than the maximum expected cross-talk level.

ELECTRICAL SPECIFICATIONS (continued)

APPLICATION INFORMATION

EXTERNAL COMPONENTS:

COMPONENT	PIN(S)	VALUE	UNITS	TOLERANCE
Receiver Termination Resistor	RXxP RXxN	75	Ω	1%
Transmitter Termination Resistor	CMIxP CMIxN	75	Ω	1%

TRANSFORMER SPECIFICATIONS:

COMPONENT	VALUE	UNITS	TOLERANCE
Turns Ratio for the Receiver		1:1	
Turns Ratio for the Transmitter (center-tapped)		1:1	

Suggested Manufacturer: Pulse, MiniCircuits

RECOMMENDED LVPECL TERMINATIONS:

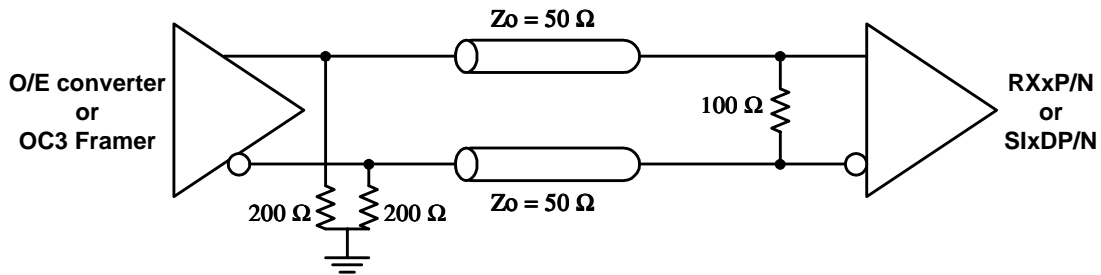


Figure 18: Differential LVPECL Inputs

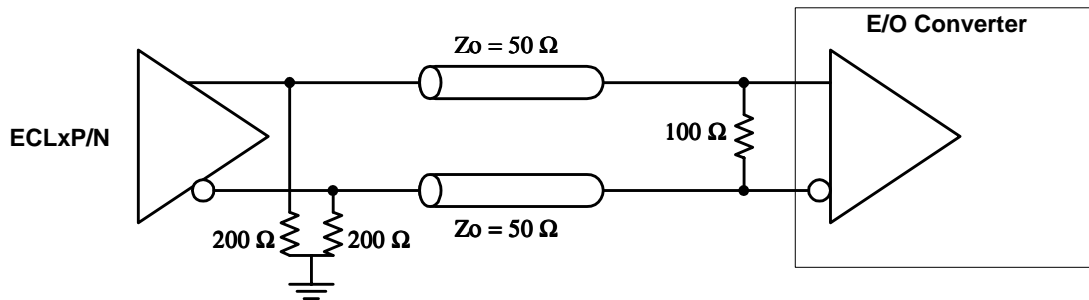
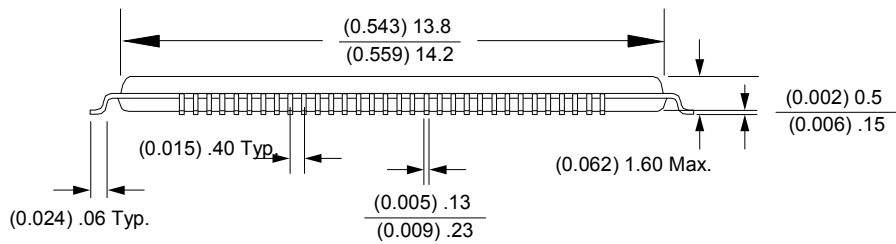
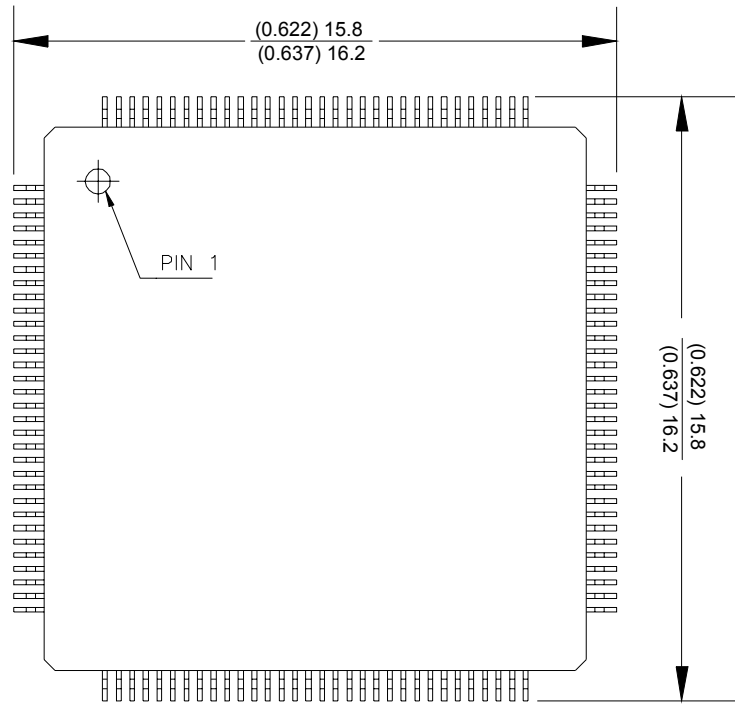


Figure 19: Differential LVPECL Outputs

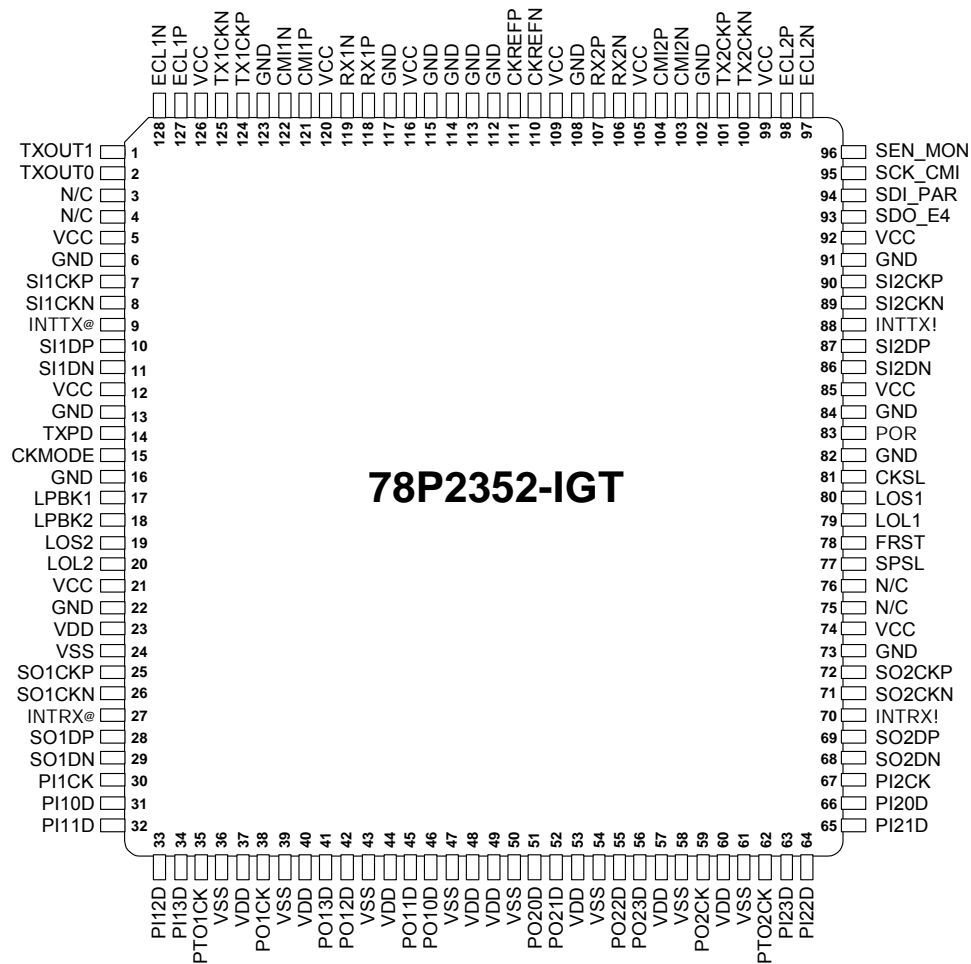
MECHANICAL SPECIFICATIONS



128-pin TQFP (JEDEC LQFP)

PACKAGE INFORMATION

(Top View)



78P2352-IGT

Target Datasheet: This Target Datasheet is proprietary to TDK Semiconductor Corporation (TSC) and sets forth design goals for the described product. The data sheet is subject to change. TSC assumes no obligation regarding future manufacture, unless agreed to in writing.

If and when manufactured and sold, this product is sold subject to the terms and conditions of sale supplied at the time of order acknowledgment, including those pertaining to warranty, patent infringement and limitation of liability. TDK Semiconductor Corporation (TSC) reserves the right to make changes in specifications at any time without notice. Accordingly, the reader is cautioned to verify that a data sheet is current before placing orders. TSC assumes no liability for applications assistance.

TDK Semiconductor Corp., 2642 Michelle Dr., Tustin, CA 92780
 TEL (714) 508-8800, FAX (714) 508-8877, <http://www.tdksemiconductor.com>

78P2352 Dual Channel OC-3/STM1-E/E4 Line Interface Unit

Revison History	
v1-2	February 13, 2003: Initial customer release
v1-3	March 25, 2003: Modified pinout (pins 73-76) ; Added conditions for LCV ; Added thermal data ; Updated Jitter Specs